

Buchan Phoenix

Rising from the ashes...

Communication for the community by the community

May 2026 Issue 110

Produced by Buchan District Outreach Inc. trading as Buchan Neighbourhood House A14882S



Next **Buchan Phoenix** contributions in by:

**Monday,
8 June 2026**

The **Buchan Phoenix**

acknowledges Aboriginal and Torres Strait Islander people as the Traditional

Custodians of the land and acknowledges and pays respect to their Elders, past and present.



GRAND OPENING

Celebration

ALL WELCOME

Sunday 14th June

5609 Buchan-Orbost Rd, Buchan

We're thrilled to invite you to the Grand Opening of our brand-new Recreation pavilion!

Official proceedings from 1 pm followed by a Community Sausage Sizzle
The new Bar will be open for business

ALL WELCOME

For further details ring 0427 586 038

buchanhallandrec@gmail.com

The **Buchan Phoenix**

is distributed to the localities of

Black Mountain,

Buchan,

Buchan South,

Buchan East,

Butchers Ridge,

Canni Creek,

Gelantipy,

Gillingall,

Glenmore,

Murrindal,

Suggan Buggan,

Timbarra,

W Tree and

Wulgulmerang.



Australia's Biggest Morning Tea

SCAN TO DONATE



Unique ID: 0019920976

Every dollar raised helps support those impacted by cancer.

HOST: BUCHAN NEIGHBOURHOOD HOUSE

DATE: **Tuesday, 19th May 2026**

WHERE: 6 Centre Road, BUCHAN

TIME: 10:00am – 12 Noon

DETAILS: Entry by donation



Bring some change to enter the raffle.

If you would like to bring along your favourite cup or mug feel free to do so.

Please bring a plate to share.

Come and enjoy a CUPPA with us!

biggestmorningtea.com.au



Cancer Council
Australia's Biggest
Morning Tea

EAST GIPPSLAND
SHIRE LIBRARIES

FREE | BOOKINGS ESSENTIAL



Navigating the Aged Care System

Bairnsdale Library

Tuesday 26 May
2.00 pm – 4.00 pm

Lakes Entrance Service Centre

Wednesday 20 May
2.00 pm – 4.00 pm

Paynesville Service Centre

Tuesday 23 June
2.00 pm – 4.00 pm

Book Now

At your library
Phone: 5152 4225
www.trybooking.com/eventlist/eastgippslandshirelibraries
Or scan the QR code



Spend Some Time With
Cindy, An Aged Care
Specialist Officer From
Services Australia
Centrelink!

Are you looking to understand how to navigate the Aged Care System and unsure where to begin?

Cindy, one of the experienced Aged Care Specialist Officers (ACSO's) across Australia, will be joining us to provide valuable information about My Aged Care and how her role can support you and your family through system.

There will be plenty of time for questions, so feel free to bring yours along!

Deborah Says

Over two cracking sunny Autumn days I was privileged to be part of an overnight trip to the historic Tin Mines area facilitated by Danny Mitton.

Danny did all the legwork, coordinating the rest of us, completing the paperwork to get permission for us to drive in via Cowombat Flat, and providing a "family connection" (his Great Grand Father

drove cattle that way) allowing us vehicle access to an area closed to the general public. (Our party included Buff's 3 nephews and a great niece whom, I'd presume, could also go in if they wished.) I was so lucky to be able to tag along.



The Cairn on the Black-Allan line we located

We were only allowed 7 vehicles', one being from Parks Victoria. Phil McGuin was our main man, along with his 2 contemporaries from the Victorian side, who squeezed a visit into their busy schedules. They arrived just after we'd got back to the cars after a determined effort scrub bashing some considerable distance, and eventually locating, (thanks to Danny's internal GPS,) a quite stunning cairn on the Black-Allan line. (Which is basically the straight piece of the NSW/Victorian border which runs between the source of the Murray and Cape Howe.) This was a highlight for me, slightly diminished when I learnt the original had burnt in the 2003 fires, and this was a rebuild. To Heritage standard.

Danny has put together some information on this herculean effort "one of the most difficult and arduous undertakings" of colonial surveyors, which I am happy to forward to anyone interested after 22nd May.

We camped at the Tin Mine Huts. It got seriously cold after the sun went down and there was a lot of muttering about snow clouds and a frost, neither of which eventuated Which was fortunate for me especially, out in the open in a borrowed swag with the flap over my head and a freezing wind trying to get in.

Lots of good food and warming drinks by a huge fire was the best, and more of the same in the morning.

Phil's colleague's headed off, and after Campbell Young (NSW Parks) arrived, we were escorted by him and Phil around some of the areas of mining activity. This included impressive lengths of sluice races that were originally 10' deep.

Danny circulated an impressive collection of historical material Campbell compiled, which I'm also happy to share.

It was a very social, fun expedition for a group of beyond busy farmers, and we parted determined to do some day trips/picnics which anyone is welcome to join.

Again...contact me late May.



Our camp with one of the two huts

Written by Deborah Woodburn

BTAC Working Bee

Mount Stradbroke



On Labor Day long weekend this year Bushwalking Victoria volunteers and Parks Victoria rangers worked to clear and re-mark the Mt. Stradbroke walking track.

The track is located on the limestone road between Gelantipy and Benambra and had become overgrown & slightly difficult to follow in sections.

The walk is 12km return and takes the average walker about 5 hours to complete. It starts out on an old vehicle track, meanders through open, sub-alpine forest and then over rocks to the summit at 1300m. The top is treeless, on large granite boulders and has extensive views over the Suggan Buggan valley and toward the Kosciusko main range.

On this weekend about 15 volunteers from the “bushwalking tracks and conservation team” (BTAC - an arm of bushwalking Victoria) put in a huge amount of work to clear and track-mark this rarely visited walk.



Chainsaws, brush cutters, hedge trimmers and hand tools were all used to improve the condition of the track and make it easier to follow.

The group is very active and has become a vital part of track maintenance throughout Victoria over the years. Their efforts are greatly appreciated by local parks staff and bushwalkers in general.



They stayed at the Wulgulmerang Recreation reserve for 3 days and found this a great place to base camp. The reserve is well equipped with power, hot showers, BBQ's, a playground & dump point for RVs. Bookings are not required and payment is by cash donation.

While mount Stradbroke walking track is in much better condition now, it is still located in a very remote area. Any bushwalkers are advised to check weather forecasts, take appropriate clothing, food, water and be proficient in reading a GPS (or equivalent) before attempting this highly rewarding walk. Always let someone know before you go and have a check-in plan with friends or relatives.

Other long walks worth exploring in the area include the Mt Cobberas summit and the silver mine walking track near McKillops bridge.

Please contact your local Parks office for any additional information.

BOOTS & BEERS

Dust off the boots, round up your mates and get ready for a big country pub night at the Buchan Caves Hotel!

19TH JUNE
FROM 8:00PM



🌸 Mother's Day at Buchan Caves Hotel 🌸

Mother's Day was made beautifully simple at the Buchan Caves Hotel, where families came together to spoil Mum with a relaxed, delicious pub lunch. The day was all about good food, good company, and making her feel that little bit extra special.

From shared laughs to full plates, it was the perfect way to celebrate the mums who do so much. Thank you to everyone who joined us and helped make the day memorable.

DJ Yeehaw is hitting the decks from **8pm 'til late**, bringing all the country bangers, pub classics and boot-scootin' tunes to keep the dancefloor pumping all night long.

*Cold beers ✓ Country tunes ✓ Good vibes ✓
Questionable dance moves after midnight ✓*

Whether you're here for a quiet beer or ready to tear up the dancefloor, **Boots & Beers** is the place to be.

Grab your crew, pull on the cowboy boots and let's make a night of it!



Free business workshops

BUSINESS VICTORIA



Skill up for business success!

Business Victoria is offering a free, intermediate-level workshop titled

'Taking your Business Online'

to help local business owners learn practical strategies to master taking your business online.

Workshop details:

Wednesday, 27 May
1:00pm till 4:00pm
Bairnsdale Library

Registrations required at 📍

<https://business.vic.gov.au/learning-and-advice/workshops-and-small-business-bus/>



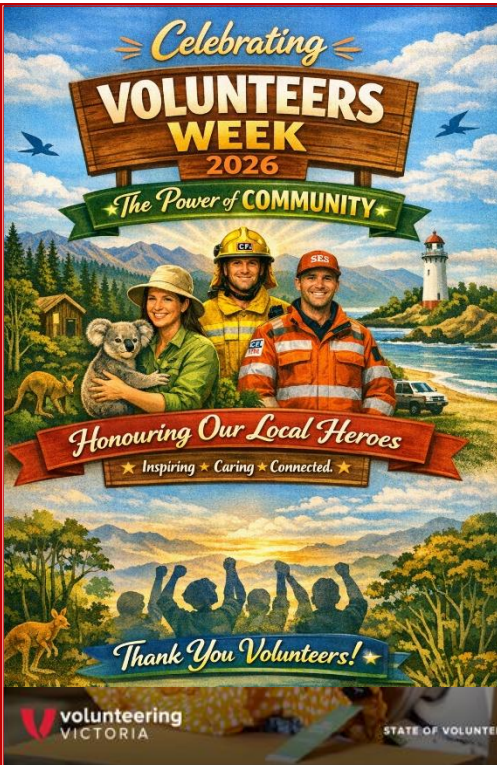
Buchan Gelantipy & Districts Renewal Association

Have you considered volunteering in your Community? We have vacancies

AGM 2026

Tuesday 19 May 2026
Buchan Rec Reserve
9.15am - 9.45am

RSVP: Susan 0448 710 230



Honouring Our Local Volunteers

Across East Gippsland, thousands of volunteers contribute to the wellbeing of our region every week

- **Emergency and community responders** who protect lives, property, and the environment — from CFA, SES crews, Cave rescue and First Aid volunteers.
- **Environmental and conservation groups** restoring bushland, caring for wildlife, and safeguarding our natural heritage.
- **Neighbourhood Houses and community centres** fostering inclusion, learning, and connection.
- **Sporting clubs and recreation groups** building teamwork, health, and local pride.
- **Arts, culture, and heritage volunteers** preserving stories, traditions, and creativity across the region.
- **Health, wellbeing, and social support networks** offering companionship, meals, and care to those who need it most.
- **Event organisers and local committees** who bring people together to celebrate what makes East Gippsland unique.

Every act of service—BIG or SMALL—creates ripples of positive change.

If you would like a copy of the Report or Executive Summary for your community or volunteer group, these are available at the Neighbourhood House or online at <https://www.volunteeringvictoria.org.au/state-of-volunteering-vic/>

Key Findings

Volunteers This section describes volunteering as it occurred in Victoria in the 12 months prior to August 2024, as reported in the survey of Victorian residents.



Leaders of Volunteers

Profile of Leaders of Volunteers:



Volunteer-Involving Organisations



To every volunteer in East Gippsland: thank you. Your generosity strengthens our communities, protects our landscapes, and ensures that no one faces life's challenges alone. You are the backbone of this region, and Volunteers Week is our opportunity to acknowledge your dedication and celebrate your contribution.

myLot –Online Planning Tool Launches

Whether you're renovating, building, or starting a home or business project, **myLot**



is a 24/7 online planning tool that helps you check if a planning permit may be required and what documents you might need.

myLot's powerful AI technology uses real-time data from regulations, mapping and relevant planning scheme to provide accurate site-specific responses and clear Application Requirements as a guide and can help you:

- Determine if your project likely requires a planning permit.
- Understand why a permit is or isn't likely required, with references to the relevant planning rules.
- Determine what documents you will likely need to submit with you planning permit application.

Your result from this service is not an official planning decision, it is a helpful guide. This service provides preliminary information only. You should always exercise due diligence by obtaining a confirmation through written planning advice or by obtaining a planning permit if required. Moving forward without necessary permits may lead to enforcement action.

<https://www.mylot.ai/>

Victoria Police

East Gippsland Neighbourhood Policing Forum



VICTORIA POLICE

The Victoria Police Neighbourhood Policing Forum welcomes local services and community members to talk with police about what issues are important in your community.

The forum will explore topics including:

- Current crime trends and crime prevention
- Young people
- Family violence
- Road policing
- Drugs and drug related crime.

The Neighbourhood Policing Forum will be run by a Victoria Police panel and questions will be taken from the audience throughout the event.

Registration is a must.

To attend, please register by sending your details to:

NHP-EAST-GIPPSLAND-MGR@police.vic.gov.au

or scan the QR code.

To submit a question prior to the forum:

[EAST GIPPSLAND NHP questions](#)

Event details

Date:
28th May 2026

Time:
1:00pm – 4:00pm
(Doors open 12:15pm)

Location:
Bairnsdale RSL
2 Forge Creek Road,
Bairnsdale Vic 3875



Scan here to register your attendance



Got a question for police?

Scan the QR code to submit prior to the forum



A SAFE VICTORIA

Neighbourhood Houses
- The Heart of Our Community



AI Information Session



Discover how AI tools like ChatGPT can help you in everyday life!

- Date: Tuesday, May 26th
- Time: 11am to 1pm
- Location: Buchan Neighbourhood House
- Cost: FREE!

Join us for an informal information session where we'll introduce modern AI tools in a friendly, non-intimidating way. Perfect for beginners, older residents, farmers, and anyone curious about AI.

Learn how to:

- Turn your questions into effective AI prompts
- Use AI safely and effectively for everyday tasks
- Access AI from your own computer or device.

Facilitated by Peter Curry, local volunteer, AI responses are for general information only - not professional advice.

For more information and bookings contact us at
0493 070 332 or 51 559 216



Buchan Hall and Recreation Reserve Committee of Management

Notice is given of a PUBLIC MEETING (Triannual) to be held at Buchan Recreation Reserve Pavilion on

Monday 22nd June 2026 commencing at 5.30 pm.

The purpose of the meeting is to nominate no less than three (3) or more than nine (9) persons as the Committee of Management for the Buchan Hall and Recreation Reserve for a term of three years. We are looking for volunteers to assist in managing the operations of the Hall and the Recreation Reserve including bookings, maintenance, cleaning, RV camping, emergency preparedness and working together with our seasonal and casual users

The current committee's term will expire on Tuesday 30th June 2026. All positions will be declared open, and nominations will be accepted prior to or on the night.

Nominations from women, Aboriginal people, people with disabilities, young people and people from culturally diverse backgrounds are encouraged.

Further information, nomination forms and nominee declaration forms may be obtained by contacting your local Department of Energy, Environment and Climate Action office or at the meeting.

For further enquiries please contact the Secretary, Evelyn Schmidt on 0427 586 038.



We're calling on Buchan Locals!

Join the
**Buchan Arts Council
Committee**

**Help Create the Events
That Bring Our
Community Together**

WE'RE CALLING ON TASK-ORIENTED, RELIABLE,
ENERGETIC, COMMUNITY-MINDED LOCALS
TO HELP DELIVER BUCHAN'S EVENTS

Creativity

Celebration

Community Spirit

INTERESTED IN JOINING?
Next Meeting
Friday 19th June – 10:30am
at the Buchan
Neighbourhood House

Your involvement helps keep Buchan vibrant

East Gippsland Winter Festival 2027 – Buchan Program
Buchan Flower Art Craft Show
Buchan Photography Competition
Buchan New year Market and Shin n' Show
And much more...



FRIDAY 29TH MAY

8:00PM – 10:00PM

THE FORGE THEATRE,
BAIRNSDALE

This is **Run to Paradise** -

where the stories are wild, the music is loud,
and the truth is somewhere in between.

TICKETS:

[https://events.humanitix.com/
choirboys-great-australian-
rock-n-roll-stories](https://events.humanitix.com/choirboys-great-australian-rock-n-roll-stories)

Gippsland East Matters



An independent
for
real progress on local issues

Are YOU the next independent member for Gippsland East?

We want a representative who works for the community, not a political party. We see the positive impacts of quality independent members in other regional seats; and Gippsland East deserves the same.

Gippsland East Matters is a local, community-powered independent movement with a growing, skilled volunteer base, ready to run a grassroots campaign.

If you're passionate about representing the people of Gippsland East, or if you want to join the group organizing to elect an independent in this year's state election, we'd love to hear from you.

Visit www.gippslandeastmatters.org to learn more

or email us at hello@gippslandeastmatters.org

Would you like to feel more confident with everyday reading, writing or numbers?



Reading and Writing for Everyday Life

Build Confidence in Reading, Writing, and Numbers



WRITING

- ◉ Max 8 students
- ◉ 20 hour course (10 weeks)
- ◉ Starts Thursday 14th May
- ◉ 1 pm to 3 pm
- ◉ Cost \$50
- ◉ Venue TAFE Gippsland Bairnsdale Building 2 Level 1 Meeting Room Bai 2.1-2

READING

- THIS COURSE IS SUITABLE FOR PEOPLE WHO:
- WANT TO REFRESH READING, WRITING OR NUMBER SKILLS)
 - PREFER LEARNING IN A SMALL, SUPPORTIVE AND WELCOMING ENVIRONMENT
 - ARE RETURNING TO STUDY, WORK OR VOLUNTEERING
 - WOULD LIKE EXTRA SUPPORT ALONGSIDE OTHER TRAINING OR EDUCATION

NUMBERS

REGISTER NOW AT :
neighbourhoodhouse@buchan.vic.au

OR CALL US AT:
0493 070 332



THIS PROGRAM IS PROUDLY SUPPORTED BY:

- READING WRITING HOTLINE
- TAFE GIPPSLAND BAIRNSDALE
- GIPPSLAND SKILLS AND JOBS CENTRE



DOMESTIC & COMMERCIAL

MOZZIES • FLIES • SPIDERS • RODENTS



 MOBILE: 0498 279 988

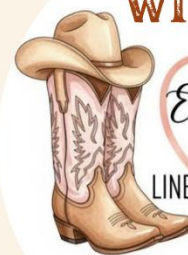
 EMAIL: SCOTT@MYPESTDOCTOR.COM

SERVICING BAIRNSDALE AND SURROUNDS

EVERY WEDNESDAY

KICK UP YOUR HEELS LINE DANCING

WITH



East Gippy Heart
LINE DANCE & EVENTS

6.00 - 8.00 PM

Cost \$15 per session
Book with the
Neighbourhood House on
0493 070 332

Venue Buchan Hall



Scientists confirm skull found in Gippsland cave a century ago belongs to giant echidna

written by Jack Colantuono, ABC Gippsland



Megalibgwilia owenii was an extinct giant echidna that lived during the Ice Age.

A fragment of bone found more than a century ago, in an East Gippsland limestone cave once explored by torchlight and rope, is now reshaping what scientists know about Victoria's Ice Age past.

The fossil, a partial skull, reveals the extinct giant echidna *Megalibgwilia owenii* once roamed the region alongside some of Australia's most extraordinary megafauna.

It was rediscovered in the state collection at Museums Victoria, where it had been preserved since it was first found in 1907 in Foul Air Cave near Buchan, more than four hours east of Melbourne.

Museums Victoria vertebrate palaeontology collection manager Tim Ziegler said the find was as much about revisiting the past as it was about rewriting it.

"It feels really special to do the fundamental work of building our knowledge and our understanding of just what Victoria was in deep time," Mr Ziegler said.

MISSING PUZZLE PIECE

The identification marks the first confirmed evidence of the giant echidna in Victoria, filling a gap of more than 1,000 kilometres between previously known fossil sites in South Australia and New South Wales.

"But until now, you know, this is a missing piece of the puzzle," Mr Ziegler said.

"And in fact, just this one fossil, preserved by random chance in a pitfall trap and then discovered almost by random chance as well — it fills a gap in this long-beaked echidna's range across the entire continent.



Tim Ziegler returned to Foul Air Cave at Buchan as part of his investigations

"It's actually amazing that one fossil here spans more than 1,000 kilometres of unknown territory for this creature."

During the Pleistocene epoch, tens of thousands of years ago, the now-extinct echidna could grow to a metre long and weigh up to 15 kilograms — about the size of a small child. It used its long, straight beak to forage through hard soils for insects. Its presence adds to a growing picture of a vastly different Gippsland landscape, once home to enormous marsupials and formidable predators.

"We know that on top of the Buchan Caves, the kind of animals that roamed there in the past included marsupials that weighed more than a ton, predatory jaguar-sized animals with no living relatives," Mr Ziegler said.

A NATURAL TIME CAPSULE

The caves themselves, carved through ancient limestone on Krauatungalong Country near Buchan, have long been recognised as a rich fossil site, but scientists say their full story is still unfolding.

"It's a very special place; the caves at Buchan are like a natural time capsule for these skeletal remains," Mr Ziegler said.

"It's one of the most diverse and abundant fossil sites in caves in south-eastern Australia." While the fossil's rediscovery relied on modern techniques, including 3D scanning and detailed anatomical comparisons, its origins trace back to early 20th century expeditions, when naturalists first ventured into the cave system. For Mr Ziegler, that continuity between past and present is part of what makes the work meaningful.

"The special thing for me as well, working in a place like Buchan, is that the history is so important too," he said.

"I can go and find who exactly was involved in these expeditions more than 100 years ago ... that still creates new meaning today for the community as it is."



REVISITING THE PAST

The discovery also highlights the enduring scientific value of museum collections, where specimens gathered generations ago can yield new insights with fresh eyes. "Nothing is ever forgotten in a museum collection," Mr Ziegler said. "But it's our job to bring that meaning back out again and return it to the community."

Researchers say the finding could prompt renewed searches through both historic collections and unexplored cave systems, in the hope of uncovering more evidence of the giant echidna's presence.

"So we're really filling in the picture, finding pieces of the jigsaw to rebuild this Ice Age megafauna of our past," Mr Ziegler said.

And with vast stretches of Victoria's fossil record still largely unknown, he said the next breakthrough could come from almost anywhere. Whether deep underground, in a dusty archive, or hidden in plain sight, waiting, as this one did, for more than a century to be seen.

Buchan Neighbourhood House Update

It has been a busy and positive few weeks at the Neighbourhood House, with a range of programs and activities bringing people together across the community.

Line Dancing at the Buchan Hall

Our Line Dancing workshops at the Buchan Hall have been a great success. Starting on Wednesday 15th April, we had 19 people express interest, with around 8 participants regularly attending. Feedback has been very positive.

Led by Belinda Crouch, the sessions are fun, welcoming, and a great way for people to get active and socialise. The cost is \$15 per session, with the Neighbourhood House covering hall hire to help keep it accessible.

Youth Group Gets Underway

It's been fantastic to see the interest in our new Youth Group, which began on Tuesday 21st April at the Neighbourhood House. Running from 5pm to 6pm each week, the group has been made possible thanks to strong volunteer support.

A big thank you to Jess Maunder from Buchan Bush Nursing, along with volunteers Jayne Cummings, Josh, and Nadine Van Dyk, who have all generously given their time to help get the program up and running.

The group is very much driven by the young people themselves, with participants suggesting activities each week. So far, this has included VR headsets, board games, cooking (including fairy bread jelly slice, and fairy floss), games at the Hall, and craft.

Snacks are provided each week including —party pies, watermelon, apple, and fairy bread—so there's definitely been a bit of a “hundreds and thousands” theme developing.

Coming up, there are plans for tie-dye, sewing, and crochet, along with some bigger activities and excursions in the future. We will also be putting in an application to FRRR to help support and grow the program.

ANZAC Day Dawn Service



This year's ANZAC Day Dawn Service was well attended, with strong community support. It was a respectful and meaningful service, and it was great to see so many people come together to commemorate the occasion.

Hamish Hancock and Danny Mitton were our speakers this year, with Rhonda Coates providing the prayer. The weather was kind—no dew overnight and mild conditions, with the sun coming out to make it a beautiful morning.

Everyone enjoyed the gunfire breakfast, and with no 10am service this year, it made for a more relaxed event for organisers.

Arts Council & Flower Show

Planning is well underway for this year's Flower Show, with the committee working through ideas and improvements based on last year's event. Ryan Davies, Culture and Creativity Officer, EGSC attended our last meeting to get a better understanding of The Show and other events in Buchan and provided some great ideas and contacts particularly in relation to promotion of our event



A volunteer thank you BBQ is being planned for Sunday 4th October in the main street BBQ area, recognising the efforts of those who helped make last year's show a success.

There has been discussion around improving displays, particularly for artwork, with some new ideas being explored for presentation and display equipment.

The committee is also working on sponsorship opportunities, with local businesses invited to contribute either financially or through raffle prizes. With funding becoming more competitive, grant opportunities and collaborative approaches are also being explored.

Community involvement remains a strong focus, with opportunities for local groups—including the new Youth Group—to contribute creatively to the show.

More details will be shared as planning continues.

The next meeting will be held at the

**Buchan Neighbourhood House on
Friday 19th June at 10.30am**



Backyard activities for kids

Kids can turn the backyard into their own adventure zone, with fun hands-on activities that spark curiosity and creativity. Exploring water, soil, plants, and bugs transforms outdoor play into exciting mini-science experiments that keep them learning while they have fun.

https://www.egwater.vic.gov.au/nwwonline_learning_fest/backyard-activities-for-kids/



Our annual National Water Week Poster Competition is now open!

This year, students from kinder age right through to Year Eight are invited to enter for a chance to win some great prizes.

The theme is 'Water heroes: make every drop count', encouraging students to explore ideas around the importance of saving water in a changing climate.

Primary/secondary schools and early-learning centres are encouraged to get involved in this fun, engaging and educational competition.

Entries close on Friday, 11 September.

To submit entries or find out more, go to <https://www.nationalwaterweek.com.au/east-gippsland-water>

EXPLORE YOUR BACKYARD Scavenger hunt



A flower



A stripy rock



A spider-web



Something blue



A feather



A bug



Two birds



Something that can hold water



Something that smells nice



A curved leaf

NATIONAL WATER WEEK

VICTORIAN 2026 POSTER COMPETITION



WATER-HEROES MAKE EVERY DROP COUNT



**Food & Fibre
Gippsland**
Connect, Innovate & Grow Together



OR SCAN HERE

REGISTER HERE

Gippsland 'AI in Ag Business'

Webinar

Any Questions?

Email Rod Hayes at:
rod.hayes@foodandfibregippsland.com.au



Why Attend?

- Turn AI from a buzzword into a PRACTICAL tool for everyday decisions in farming, food processing and regional businesses
- See live, real-world scenarios (diesel costs, supply constraints, project chaos) and how AI can help MODEL options and reduce risk
- LEARN simple, low-cost tools you can start using tomorrow – no IT team or AI strategy required
- Understand how to PROTECT your data and reputation, with plain-English guidance on privacy, security and governance
- Ask your own QUESTIONS in an open, interactive format – bring challenges from the paddock, boardroom or office

Webinar Session Options

Session 1:

Monday 25 May | 6.00 – 7.00 pm, or

Session 2:

Wednesday 27 May | 1.00 – 2.00 pm, or

Session 3:

Wednesday 27 May | 4.00 – 5.00 pm



JOIN BUCHAN CRICKET CLUB!

**WE HAD A GREAT SEASON!
AND LOOK FORWARD TO THE NEXT!**



All ages and skill levels welcome!

Fun, friendly, competitive cricket

Training and matches in the beautiful Buchan area



**Contact us to join:
buchan.cricket@outlook.com**







COMMUNITIES FOR CHILDREN EAST GIPPSLAND

Invite You To Attend MENTAL HEALTH FIRST AID TRAINING 2 Day Workshop

What is mental health first aid?

Most people are familiar with physical first aid and the idea that when you attend a physical first aid course, you learn the skills and knowledge required to recognise and respond to life-threatening emergencies and provide a first aid response to a casualty across a range of different situations. Mental Health First Aid training adopts a similar approach. Our courses teach participants about the different types of mental illness and through our practical action plan you learn the skills to recognise and respond to someone experiencing a mental health problem or mental health crisis.

Mental Health First Aid training helps community members to:

-  Intervene early: Recognise the warning signs of mental health problems.
-  Respond in a crisis: Respond across a range of crisis situations where a person may be at risk of harm.
-  Offer support: Learn the skills to speak openly and accurately about mental health.
-  Reduce stigma: Reduce stigma and increase support for someone experiencing and living with mental health problems


When: Monday, 15th and Tuesday, 16th June

Time: 9.30am to 4.30pm

Venue: The Hub, 27 Dalmahoy Street, Bairnsdale

Cost: Free (places are subsidised by Communities for Children, Uniting)

Catering: Morning and Afternoon Tea provided - please provide dietary requirements upon registering

-  **Please note:** You must be able to attend both days to register for this training
Participants will need to bring their own lunch

To Register Click on the link: <https://www.trybooking.com/DLKNO>

Or

Phone: Jenny St John - CfC Coordinator on 0439724026

**1 in 5 Australians
will experience
mental health
problems in any
given year**

**Mental illness now
affects every
Australian either
directly or
indirectly**





Easter Fundraising

We had a fantastic fundraising period over Easter, raising a significant amount through our Easter Egg Raffle and the mechanical bull at the Buchan Rodeo.



Firstly, thank you again for your generous support through chocolate donations and raffle ticket purchases: we raised \$382 on the final day of Term 1 (Thursday 2/4/26).

A huge thank you to the Rodeo Committee for generously covering the cost of the mechanical bull that Buchan Primary School hosted on the day. Thanks to their support, we raised approximately \$2,000 for school programs and resources. It was fantastic to see so many students give it a go (and, in the interest of kindness, I've decided not to share photos of students (or staff!) being bucked off!)



See our *Free* conversation guide for parents



Available in Arabic, Cantonese, Mandarin, Vietnamese, Punjabi and English

www.vichealth.vic.gov.au/parent-vaping-guide



There are many ways you can give us a hand.

Your local CFA Brigade needs you, and there are many ways you can help. Roles include daytime firefighters, community educators, and support roles. You don't need experience, and you'll be amazed at what you will achieve, while fulfilling a vital and rewarding role in your community.



Scan the QR code to find out how you can help.



BRUTHEN SENIORS PRESENTS

**MARCH-JUNE 2026
SENIOR'S EVENT SCHEDULE**



**WEDNESDAY
4TH
MARCH**

BRUTHEN BOWLS CLUB - Address: 3 Seehusen Ave, Bruthen
Join us for a delightful Seniors Lunch at the Bowls Club, commencing at 12:30 PM!
Enjoy a delicious meal and great company in a friendly atmosphere.

**WEDNESDAY
18TH
MARCH**

OFF THE WHARF CAFE- Address: 39 Bullock Island Rd, Lakes Entrance 12:30PM
Join us for a relaxed morning/afternoon at the beautiful Lakes Entrance waterfront. To ensure easy attendance for everyone, we are pleased to offer a convenient bus service running directly from Bruthen.

**WEDNESDAY
1ST
APRIL**

BRUTHEN BOWLS CLUB - Address: 3 Seehusen Ave, Bruthen
Join us for a delightful Seniors Lunch at the Bowls Club, commencing at 12:30 PM!
Enjoy a delicious meal and great company in a friendly atmosphere.

**WEDNESDAY
15TH
APRIL**

BUCHAN CAVES HOTEL-Address: Caves Hotel, 49 Main Rd, Buchan
Nestled in the breathtaking Buchan Valley, Buchan Caves Hotel is steeped in history and full of character. 12:30 PM

**WEDNESDAY
6TH
MAY**

BRUTHEN BOWLS CLUB - Address: 3 Seehusen Ave, Bruthen
Join us for a delightful Seniors Lunch at the Bowls Club, commencing at 12:30 PM!
Enjoy a delicious meal and great company in a friendly atmosphere.

**WEDNESDAY
20TH
MAY**

PAYNESVILLE MOTOR CRUISER CLUB -Address: 80 Slip Rd, Paynesville 12:30PM
Experience absolute waterfront dining at Paynesville Motor Cruiser Club, the town's premier spot for stunning views and a relaxed atmosphere.

**WEDNESDAY
3RD
JUNE**

BRUTHEN BOWLS CLUB - Address: 3 Seehusen Ave, Bruthen 12:30PM

**WEDNESDAY
17TH
JUNE**

NICHOLSON HOTEL -Address: 929 Princes Hwy, Nicholson 12:30PM

FREE BUS SERVICE - SPACES ARE LIMITED

This service departs directly from the Community Health Building Main Street Bruthen @ 11.30 am.

To reserve your seat and ensure a smooth journey, simply call Sue at 0407507849.

Bruthen and District Senior Citizen Club. No Venue.
Phone: 0407 507 849 or 0497 544 490 for more info



Bruthen Seniors

Bruthen Seniors is your chance to enjoy good food, good company, and unforgettable fun!
Open to everyone 60+, this thriving social club meets on the 1st and 3rd Wednesday of every month.

Whether you're seeking new friends, lively conversations, or adventures beyond the home, we've got you covered. Plus, our free bus service makes it easy to join in! Let's dive into what makes this club a highlight of the month for so many.

Bruthen and District Senior Citizen Club.

No venue.

Phone: for more info

Sue 0407 507 849

B&DNH 0497 544 490



BBNA
Buchan Bush Nursing
Association

 **Neighbourhood
Houses**
Buchan Neighbourhood Houses
Victoria

YOUTH GROUP BLAST!



TUESDAYS

5:00pm-6:00pm

Buchan Neighbourhood House

No boredom allowed!

Games • Music • Friends • Epic Fun! Tuesday!

Level up your

To book contact

**0493 070 332
or 0448 064 760**



WORLD NO TOBACCO DAY

COLOUR RUN

 **SUNDAY
31 MAY**

 **WEST BAIRNSDALE OVAL
52 ANDERSON ST**



10:00AM
COLLECT YOUR
FREE T-SHIRT



11:00AM
COLOUR RUN
STARTS




11:30AM - 2:00PM
LUNCH, CULTURAL
ACTIVITIES, GAMES &
MORE!

FREE ENTRY • FUN • HEALTHY FOOD • COMMUNITY

**REGISTER
NOW**
TO GET A
FREE T-SHIRT!



 **SMOKE AND VAPE FREE EVENT**

PROUDLY SUPPORTED BY



PROPOSED NEW BUCHAN BUSH NURSING CENTRE

Many of the Buchan Community have been aware for some time that the BBNA are proposing to construct a new purpose-built facility. The BBNA would like to provide the Community with an update on the proposal, as well as provide some background as to why building a new Centre is vital in meeting the future health needs of our community.

Buchan Bush Nursing Centre has been providing health services and support to the Buchan and district community for over 100 years. The current building was designed 44 years ago and has serviced us well.

It has generally been well maintained over the years and has, until recently, mostly met the health services requirements of the community. However, several audits and reports undertaken in recent years have identified significant shortcomings with the current facility, particularly in relation to the limitations of space and the poor functionality of the facility, poor patient flow and patient privacy, occupational health and safety issues for both staff and clients, lack of disability access and facilities, constraints in preventing contemporary models of care being developed, as well as not meeting current quality and medical building standards.

The Department of Health has made it clear that there would be no further funding to upgrade the current facility, as so much work needs to be done, and building a new purpose-built facility is the most pragmatic option for addressing the issues of the current facility.

So, with this challenge, the BBNA has been planning and developing a strategy to build a new facility.

Firstly, we acquired a large greenfield site adjacent the CFA in the Main Street which will be suitable to build the new facility. We have now developed detailed plans and have received Council approval to start work. Cost to date is just short of \$1 million and we will need another approximately \$6 million to complete the project.

All we need now is the funding to undertake the work. Two applications for funding have not been successful so far. However, we are much further ready to go to tender now and a third round of funding is currently out. We are hoping we will be third time lucky. The funding stream we are applying to is only available for Rural Health Infrastructure, ie not for wages or operational costs but we are competing state-wide and against large hospitals so nothing is guaranteed though we remain forever optimistic.

An overview of what the new facility will provide

- 500m² single-story building constructed with metal framing and clad in a combination of fire-resistant metal and composite cladding. (Compliant with current building and bushfire regulations; improved energy efficiencies; enhanced infection control via surfaces and finishing, zoned air conditioning; occupational health and safety compliant). Off street parking.

Additional information

- It will have 4 x consulting rooms with privacy;
- a modern treatment room with dedicated bathroom, medical store and airlock access to discrete all weather ambulance bay with safe transfer option for patients on trolleys;
- air lock front entry with automatic door;
- reception and administration area with enhanced safety for staff;
- welcoming waiting area with child friendly spaces for parents and families;
- disabled toilets and ablutions;
- multipurpose room for patient group activities and meetings; flexible spaces to allow for current and future expansion of allied health services; safe and comfortable environment for vulnerable people during climate emergencies;
- fully equipped staff and change room including lockers;
- manager's and nurses' office;
- laundry;
- internal general storeroom and medical storeroom; external medical equipment store;
- solar power, batteries and backup generator;
- enhanced communication ability particularly during emergencies; better connectivity with emergency services (CFA and SES); enhanced safety and usability during severe weather events (no large trees, more open usable spaces, safer evacuation spaces);
- staff and client parking including disabled;
- hard and soft landscaping;

Bringing this facility to reality will better ensure that the BBNA continues to receive the necessary funding to deliver the current vital services to our community, as well as addressing the future needs of a modern and relevant health service.

We hope everyone is as excited as we are about the future of the BBNA and look forward to everyone within the community, as well as visitors to our district, continuing to support the proposal.



BUCHAN RECREATION RESERVE

WORKING BEE

We're getting ready to move out of the old pavilion at the **Buchan Recreation Reserve** and into our brand new one!

COME and JOIN us on

Sunday 17th May

10am onwards

Whether you can stay for an hour or help all day, every pair of hands makes a difference. This is also your chance to get a sneak preview of the new pavilion!

If you have a trailer, ute, or small truck, that would be especially helpful for some tip runs.

ALL WELCOME – bring your tools, gloves, community spirit. Families and locals are encouraged to come along.

Please spread the word!

See you at the Buchan Recreation Reserve on Sunday

Are you teaching your young workers the skills to stay safe?

If you're an employer, their safety is your responsibility. Get the tools to support your young workers. Ask yourself: would you work for you?

WorkSafe Young Workers

WorkSafe | Reducing workplace harm.

VICTORIA
The Government

Mobile Library Dates 2026

TUESDAY: May 19, Jun 2, Jun 16, Jun 30

- 9:00-10:00 - Buchan Main Street
- 10:30-11:30 - Buchan Neighbourhood House
- 1:30-2:30 - W Tree—SIBA

TUESDAY: May 26, Jun 9, Jun 23

- 9:00-9:45 - Gelantipy Bush Nurse
- 10:30-11:30 - Buchan Neighbourhood House
- 12:45-1:30 - Buchan Primary School



What can you do at this mobile service centre?

- Borrow books, CD's, DVD's audio books and more
- Pick up a Council newsletter and subscribe
- Lodge a report or request
- Pay an account / make electronic payments
- Make enquiries, collect and lodge application forms
- Register your dog and cats
- Access and complete surveys
- Learn about and provide feedback on projects
- Use a computer with free internet access
- Have a chat and much more



Darren Chester

Putting Locals First

#lovegippsland



NATIONALS for Gippsland

www.darrenchester.com.au

Authorised by Darren Chester, The National Party of Australia, Level 1, 89 Raymond Street, Sale, VIC, 3950.

Tim BULL

State Member for Gippsland East



Buchan Caves Reserve image courtesy of Visit Victoria Content Hub

📍 143 Main Street, Bairnsdale VIC 3875

☎ 03 5152 3491

✉ tim.bull@parliament.vic.gov.au

THE NATIONALS



Bespoke accommodation within the heart of Buchan



p: 03 5155 9419
w: buchanstays.com
e: hello@buchanstays.com



WWOOF AUSTRALIA

Est. 1981

Supporting the growth of organic farming and sustainability within Australia

WWOOF.COM.AU
0455-023-173

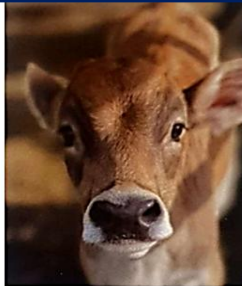


Alexandra Jenkins

Cattle Ultrasound Technician

Ph: 0455 068 599

Email: avscanning.info@gmail.com



Providing the following services:

- ✓ Pregnancy Ultrasound Testing
- ✓ Foetal Aging
- ✓ Foetal Sexing
- ✓ Reproductive Abnormalities



BLACKFORREST

Fireworks Displays



We light up the night!

0438 550 979

blackforrest.info@gmail.com

www.blackforrestfireworks.com.au



Rohan Rogers

0430 003 544

info@blowflyhillphotography.com

www.blowflyhillphotography.com

Events

Sports

Equestrian

Heirlooms

Landscapes

Memorabilia

Framing

Commercial

Family

Portraits

Headshots

Websites

Stockwork

Livestock

MASSAGE & NATUROPATHY

MASSAGE and **NATURAL HEALTH CARE** at the Buchan

Neighbourhood House including: Naturopathy, Herbal and Homeopathic remedies, Relaxation, Aromatherapy, Sports Therapies, Remedial Massage Therapy, Pre and Post Natal and baby massage.

Available for adults and children of all ages.

\$70 one-hour session * Gift vouchers available *

For further information and bookings please contact the Buchan Neighbourhood House or Sharon Dent silvaust@gmail.com or call **0468 387 524**



Contact Buchan Neighbourhood House to advertise your business in this newsletter!

\$55 FOR 12 EDITIONS

OR \$5.50 PER EDITION

INCL GST

This newsletter is delivered to every household in the district (on or around the 15th day of the month) and is also available online at buchan.vic.au or via Facebook at Buchan Neighbourhood House. All editions are available electronically at the State Library online site (Trove). If you are not receiving the newsletter please contact us and we will ensure that a copy is mailed to your address.

Newsletters can be posted for an annual fee of \$18.00 incl. GST to anyone outside the district, or contact us with your email address and we can send an electronic version for free. Dates for submissions will be advertised in each edition and we welcome your contributions. Submissions closing date for the next edition is **Monday 8th June 2026**. We welcome articles and contributions from everyone and encourage our local clubs, groups, agencies, organisations and businesses to send us their information. Submissions can be sent to info.buchan@gmail.com or drop them into the Neighbourhood House. The Buchan Neighbourhood House takes no responsibility for opinions expressed by contributors to the *Buchan Phoenix*.

The Editors reserve the right to reject articles and advertisements and to edit submissions if necessary.

All submissions should include the author's full name, address and phone number, but may be anonymous if preferred. Buchan Neighbourhood House is open Monday to Thursday from 10.00am—4.30pm. Advertisements are \$55 for 12 editions or \$5.50 per edition including GST.

Buchan Neighbourhood House contact details:

Buchan Neighbourhood House is dedicated to supporting carers in Victoria and offers a warm, secure, and welcoming environment.

Monday – Thursday 10:00am-4:30pm

6 Centre Road, Buchan

0493 070 332

03 5155 9216

Our organisation is Carer Friendly and helps connect carers to necessary services. We have strong ties with Carers Victoria and participate in their events, workshops, and informational opportunities for both carers and staff.



East Gippsland Shire Outreach Services

The mobile bus service provides an opportunity to use the library service and engage with their staff on Council matters. All community members are welcome. Please see the schedule below for when the bus is visiting your community.

What you can do at the mobile service:

- Borrow books
- Pick up a Council newsletter
- Lodge a report or request
- Pay an account / make electronic payments
- Make enquiries, collect and lodge applications
- Register your dogs and cats
- Access and complete surveys
- Learn about and provide feedback on projects
- Use a computer
- Have a chat and much more



The next services will be:

Buchan Neighbourhood House

Every Tuesday from 10:30am—11:30am

Buchan Primary School

Tuesday 26th May 12:45pm—1:30pm

Tuesday 9th June 12:45pm—1:30pm

Tuesday 23rd June 12:45pm—1:30pm

Buchan Main Street

Tuesday 19th May 9:00am—10:00am

Tuesday 2nd June 9:00am—10:00am

Tuesday 16th June 9:00am—10:00am

Tuesday 30th June 9:00am—10:00am

Gelantipy (Bush Nurse Centre)

Tuesday 26th May 9:00am—9:45am

Tuesday 9th June 9:00am—9:45am

Tuesday 23rd June 9:00am—9:45am

W Tree (SIBA)

Tuesday 19th May 1:30pm—2:30pm

Tuesday 2nd June 1:30pm—2:30pm

Tuesday 16th June 1:30pm—2:30pm

Tuesday 30th June 1:30pm—2:30pm

Catholic Church

St Dymphna's,
Woodgates Road, Buchan.

Meets 3rd Saturday of the month at 9am until further notice.

For service details contact

Mary Wheeler 5155 9330

Anglican Church

St Mary's,
Main Street, Buchan.
Café Church
Meets 5th Sunday of month at 11:00am.

For details contact

Rhonda Coates 5155 9373