

Buchan Phoenix

Rising from the ashes...

Communication for the community by the community

March 2026 Issue 108

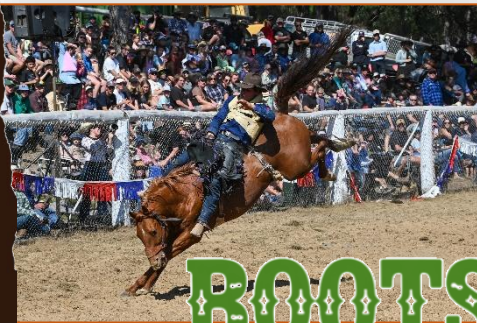
Produced by Buchan District Outreach Inc. trading as Buchan Neighbourhood House A14882S



Buchan is gearing up once again for one of its most cherished annual traditions, with the **Buchan Rodeo** returning on **Easter Sunday, 5 April 2026**. The event will take place at the **Buchan Rodeo Grounds, Buchan South**, and promises a full day of action, community spirit, and family-friendly entertainment.

The rodeo remains a highlight of the district's Easter celebrations, drawing competitors and spectators from across East Gippsland and beyond.

SUNDAY



BOOTS,

available online via Eventbrite. Simply search **"Rodeo Easter Sunday 2026"** on **Eventbrite** to secure your entry ahead of time.

Whether you're a long-time supporter or planning your first visit, the Buchan Rodeo offers a vibrant, welcoming day out for locals and visitors alike.

Bring your hat, bring your friends, and enjoy a true celebration of Buchan's rural heritage this **Easter Sunday**.

BULLS



& Smilie



Next **Buchan Phoenix** contributions in by:
Wednesday,
1 April 2026

The **Buchan Phoenix** acknowledges Aboriginal and Torres Strait Islander people as the Traditional Custodians of the land and acknowledges and pays respect to their Elders, past and present.



The **Buchan Phoenix** is distributed to the localities of Black Mountain, Buchan, Buchan South, Buchan East, Butchers Ridge, Canni Creek, Gelantipy, Gillingall, Glenmore, Murrindal, Suggan Buggan, Timbarra, W Tree and Wulgulmerang.



EASTER RAFFLE – BUCHAN PRIMARY SCHOOL

Buchan Primary School is excited to announce the return
of our **Easter Raffle!**

The raffle will be drawn on the final day of Term 1 –
Thursday, April 2nd.

We're aiming to gather chocolate donations once again!
All donations can be dropped off with **Julie** in the school
office.

Your **SUPPORT** is greatly appreciated as we prepare for
this festive event!



Buchan Neighbourhood House & Esports Collective present **Bytes & Biscuits**

Learn to use your Phone or Tablet with Confidence

Join us for a friendly monthly session where young Digital Mentors help you build
practical digital skills.

Learn things like:

- Using Facebook to stay connected
- Online banking and accessing services
 - Video calling family and friends
- Finding community information online
 - Smartphone and tablet basics
 - Staying safe online



**Enjoy a relaxed session with tea,
coffee and biscuits while you learn**

Why join?

Local young people (aged 14–25) are being trained as Digital Mentors
to support older Australians to build confidence using technology

Location: 58 Macleod St, Bairnsdale

When: Monthly Wednesdays starting 29 April
Bus leaves Buchan Neighbourhood House at
10:00am

Travel provided on the Buchan
Football/Netball Club Bus

Bookings essential – places are limited

To book or for more information:
Buchan Neighbourhood House
0473 070 332

\$100 POWER SAVING BONUS

FOR ELIGIBLE CONCESSION CARD HOLDERS



NHVIC.ORG.AU/PSB



POWER REBATES ARE NOW AVAILABLE.

YOU CAN APPLY ONLINE OR COME INTO THE



BUCHAN NEIGHBOURHOOD HOUSE
FOR ASSISTANCE

The fifth round of the **\$100** Power Saving Bonus opened for new applications on 25 August 2025.

To be eligible for the fifth round of the Power Saving Bonus program, Victorian households will need to:

- Have a recent residential electricity bill and be the account holder for that bill
- Hold one of the following concession cards:
 - Health Care Card
 - Pensioner Concession Card
 - Veterans Affairs Pensioner Concession Card; or
 - Veterans' Affairs Gold Card

As a part of the application process applicants will also be required to provide a secondary form of identification to for authentication purposes, this can include a driver's license, Medicare card, ImmiCard or Australian Visa.

Victorian concession card households can apply for the new \$100 Bonus by **apply in-person through a participating community organisation – Buchan Neighbourhood House**, visiting the Victorian Energy Compare website compare.energy.vic.gov.au or call the VEC helpline-1800 000 832 to apply over the phone.

- ✓ Information collected is shared with the Australian Government to confirm identity and is not retained by DEECA.
- ✓ The \$100 Power Saving Bonus for Victorian Households (PSB5) is limited to one payment per eligible household.

Johnsonville MOWER RACES



Gold Coin Entry
Follow Us On
Facebook
For More Info

Saturday 28th March 2026



Gates Open at 9am

Racing Starts at 10am

Catered Lunch available

Harmans Road Johnsonville - Salt Creek



14th March 2026

Open 9am to 4pm at the
Great Lakes Air Field Colquhoun Rd
Lakes Entrance

Entry \$5 - Per Person or \$10 Per Vehicle

TRUCKS CONVOY FROM TRARALGON & ORBOST TO LAKES ENTRANCE

Trucks Expected to arrive at 11am

Truck Entry Is Free

CONVOY START TIME TRARALGON 7:30AM & - ORBOST 9AM

All Trucks Welcome - Show 'N' Shine - Charity Auction
Food Trucks - Merchandise Stalls - Family Fun Day - Truck'n With Tim

ALL PROCEEDS DONATED TO CAMP QUALITY & ANGEL FLIGHT

This Event Is Alcohol Free.

CONTACT DETAILS/ Chelsea: 0455 531 991 Chris: 0418 804 508
Email: egconvoyforkids@gmail.com / Facebook East Gippsland Convoy For Kids

Buchan Valley

Golf Club

Nine-hole layout with alternating tees, and surrounded by Australian flora, fauna and birdlife.

All welcome 😊

Enquiries:

Figsy 0428 559 305



- ➔ **How soils work**
- ➔ **Soil Health**
- ➔ **Soil Fertility**
- ➔ **The 7 essential steps to managing soils well**

FRIDAY 20th MARCH 2026

9:00am to 12:30pm
Bruthen Mechanics Hall
49 Main St, Bruthen

At this workshop you will learn about soil and soil health. The ½ day covers the biological, physical, and chemical aspects of soils.



Elder Rights Australia

Promoting the human rights of all older people



Invitation to all Community Members

Elder Rights Australia

will be speaking at

Buchan Neighbourhood House:

Thursday 26th of March 2026
at 10am

To provide information on:

- The National Aged Care Advocacy Program
- Aged Care Rights
- Recognising and Responding to Elder Abuse
- Navigating the Aged Care System

Aged Care Advocacy Line

1800 700 600 | elderrights.org.au



Elder Rights Australia Ltd is a founding member of the National Older Persons Advocacy Network (OPAN), delivering the National Aged Care Advocacy Program (NACAP), an Australian Government initiative. ABN 63 367 539 827.

UNDERSTANDING SOILS

with David Hardwick

Learn about how the soils on your place really work

REGISTER NOW

Call: Emma Orgill 0400 467 921

Link: <https://bit.ly/49T7vBU>



PLEASE BRING A SPADE/BUCKET OF TOPSOIL ON THE DAY

This TopSoils event is supported by the Australian Government through funding from the Natural Heritage Trust under the Climate-Smart Agriculture Program.





BUCHAN NEIGHBOURHOOD HOUSE
 Trading as Buchan District Outreach Inc.
 ABN: 82647614871
 6 Centre Road Buchan 3885
 Ph. 51 559 216
buchanbnh@bigpond.com
<https://buchan.vic.au/>



Neighbourhood House
The heart of our community

A new edition of the **LOCAL TELEPHONE DIRECTORY** is now being prepared, and it promises to be our most accessible version yet, featuring all resident phone numbers, plus details on local clubs, groups, and community services—all printed in clear, easy-to-read **16-point type**.

To keep this valuable community resource affordable for everyone, we are once again inviting

local businesses to support the directory through advertising.

**This is the size advert
 13cm wide x 5cm high
 Cost only \$20.00**

Your contribution not only promotes your business to every household in the district—it also helps ensure this directory remains a practical, low-cost tool for the entire community.



Black Rainbow Printing does have some previous advertisement on file, making it simple to participate again. If you'd like to update your design, you can create your own layout using the size 13cm wide x 5cm height and email us an electronic copy. Your ad not only promotes your business to every household—it also helps keep this community directory affordable.

Please contact the
BUCHAN NEIGHBOURHOOD HOUSE
 before **28 April 2026** by
DROPPING in,
CALLING
 0493 070 332, 5155 9216
EMAILING info.buchan@gmail.com

Stormwater Management Plan
Have your say
Feedback will be open until 12pm, 25 March 2026

We're coming to Buchan on
Tuesday March 24 10:30am – 12:30pm
at Buchan Neighborhood House

Your local knowledge matters!

We're developing a Stormwater Management Plan for East Gippsland, and we need your insights to make it meaningful and effective.

By sharing your experiences, whether it's flooding, drainage concerns, environmental or ideas for improvement.

You'll help us identify key priorities and plan for the long-term care of our stormwater system.

Visit **YourSay** East Gippsland to learn more



Feedback will be open until 12pm, 25 March 2026



East Gippsland Shire Council
 Phone 5153 9500
 Email feedback@eastgipps.vic.gov.au
 Web eastgippsland.vic.gov.au



FREE | BOOKINGS NOT ESSENTIAL

Games Night

Libraries After Dark



Bairnsdale Library
3rd Thursday Monthly
6.00pm - 8.30pm

Book Now

At your library
5152 4225
www.trybooking.com/eventlist/eastgippslandshirelibraries
Scan the QR code



Join us at Libraries After Dark for some tabletop games!

We're hosting a games night every 3rd Thursday as part of our Libraries After Dark program. Feel like getting out of the house Thursday night but have nothing to do? We've got you covered! There will be speed puzzling, board games and chess available so bring a friend - bookings appreciated!



Chair Yoga

With International Yoga Teacher Rhonda James



Bairnsdale Library
Wednesday 18 March
2.00pm - 3.00pm

Book Now

At your library
5152 4225
www.trybooking.com/eventlist/eastgippslandshirelibraries
Scan the QR code



Are you interested in learning a new way to relax and maintain fitness?

Chair yoga is gentle and supports the body to move into postures while sitting in a chair. There are various yoga techniques that can be integrated with chair yoga that supports older adults to develop and maintain muscle strength. Researchers have found that chair-based exercise improves upper and lower body.

Want to feel good, have a laugh and have a good stretch? Come and try chair yoga with International Yoga Teacher Rhonda James.



MARCH MONTHLY MOVIE SCREENING



Bairnsdale Library
Thursday 12 March
2:00pm-4:00pm

Lakes Entrance Service Centre
Thursday 19 March
10:00am-12:00pm
2:15pm-4:15pm

Paynesville Service Centre
Friday 20 March
10:00am-12:00pm
2:00pm-4:00pm

**To book and for film information
Ask at your library
Phone 5152 4225**

FREE - BOOKINGS ESSENTIAL

Join us for a free screening of a wide selection of films!

Experience a free movie screening in a comfortable and welcoming environment.

Enjoy light refreshments and the opportunity to connect over shared cinematic experiences.

For specific film information, ask in library



**THE OLD SUGGAN BUGGAN
SCHOOLHOUSE COMMITTEE INC**

also known as
(The Gelantipy Historical Society)

will hold it's
Tri-Annual Meeting
in
Suggan Buggan
at
The School House
on

**SATURDAY
21 March 2026 at 1:30pm**

ALL WELCOME
BYO chairs and refreshments



Deborah Woodburn – Secretary
Gordon Moon - President

Support the Suggan Buggan Fire Slip-On Project

Community Fire Response

A remote community needs essential fire-response equipment to protect homes, land, and local wildlife. Funds raised will go toward a community fire slip-on unit to improve early response capability.

How You Can Make a Difference

Your donation directly supports the purchase of essential fire-fighting equipment for a remote community.

Find out more information at :
<https://gofund.me/bd08b4385>



Scan the code



The slip on available for purchase from the Gelantipy CFA

Who are we?

Suggan Buggan is a tiny, remote community surrounded by forests, farms, & precious wildlife. When fire threatens, early response is everything — but our distance from emergency services leaves us vulnerable. A dedicated fire slip-on unit will give locals the ability to respond quickly, protect homes, safeguard the environment, & support each other when it matters most.

Suggan Buggan
Fire Project

Join Us in Keeping Suggan Buggan Safe
Your kindness helps protect lives, land, & the spirit of a small
community that looks after one another.

Congratulations to our own

'LOCAL LEGEND'

U13 player **Campbell Hill** was invited to
the Bairnsdale Cricket Association

Under 13's presentation at
Meerlieu Cricket Ground on Friday 27th Feb 2026.

Campbell has
had an
exceptional
season
with the bat
scoring 198
runs and
with the ball
getting 10
wickets.



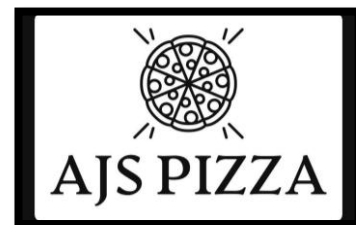
Campbell - Congratulations



U13 SEASON FINALE

A fabulous win to cap off the Under 13s
season last night with a celebration in style
afterwards at Howitt Park for a pizza night.

The festivities were made possible by
generous sponsorship from both



and **Danny Mitton**
who made a generous donation to the club
for juniors in season 2025/26.





Walk & Talk

Join us every Tuesday morning at 9:30am for a refreshing walk and friendly chat.

We meet at Buchan Neighbourhood House and walk together, returning back around 10:30am for tea, coffee and a chat.

** During winter we start at 10:30am (TBC)*

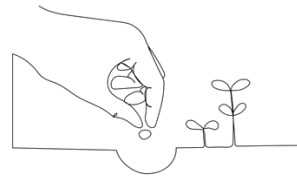
All abilities, all welcome.

For more information, please contact
 Jess – Wellbeing Support Officer
 0448 064 760



Stage 2 of the community garden will begin on the 23rd of March, running throughout the week.

During this time Frontier Services will be on site to assist with stage 2.



If you're interested in getting involved or lending a hand please reach out to Jess at the BBNA for more details.

shutterstock.com - 2365714743

If you think you may need any wellbeing support and live in the Buchan, Gelantipy and District please contact Jess the Wellbeing Support Officer at BBNA, Monday to Thursday on 0448 064 760.



Farm First Aid Training.






LOCATION
 Elders Bairnsdale (Boardroom)
 726 Princes Hwy, Bairnsdale

DATE/TIME
 Thursday 30 April
 9.30am to 4.30 pm

DETAILS - Free First Aid course for East Gippsland farmers. Morning tea and lunch provided. Limited places

Please RSVP to Leanne - Bairnsdale Neighbourhood House 0428 330 756/5152577

For more information contact:
 Allison Norfolk 0438 548 008 or email anorfolk@redcross.org.au

On- farm accidents are a major concern

Incidents involve workers and bystanders (including children) and occur in a range of circumstances on a variety of farm and agricultural enterprises.

Learn first aid skills to provide support in an emergency

Develop skills and improve farm and rural workplace safety by enrolling in the Red Cross Farm First Aid course delivered by an accredited First Aid trainer. Participants are provided with the knowledge and skills to assist themselves, and others, to cope with accidents and injury both from a physical and mental wellbeing perspective.

As part of the course, there is a wellbeing section that is designed to help start the conversation around mental wellbeing and increase awareness of relevant service available for individuals, family and friends. On completion of the course, participants receive a Statement of Attainment in Provide Basic Emergency Life Support (HLTAID010) – often required for insurance and employment opportunities.

Farm First Aid training topics

- Basic Life Support (DRSABCD)
- Perform CPR
- Breathing emergencies
- Allergic reaction / Anaphylaxis
- Cardiac emergencies
- Severe bleeding and wound care
- Fractures and dislocations
- Shock management
- Envenomation
- Wellbeing and mental health support and assistance
- Environmental impacts
- Reporting
- Recovery and Resilience
- Legal requirements



Buchan Precision Rifle Club

NRL22 March COF at SSAA East Gippsland – Buchan Rifle Range

14th March 2026

On the 14th of March B.P.R.C will be hosting the MARCH NRL22 course of fire at SSAA East Gippsland – Buchan Rifle Range

FUN FOR WHOLE FAMILY & FRIENDS

- ✓ Sign in & match registration opens at **8:30am**
- ✓ Safety briefing at **8:50am** sharp with sighting in commencing immediately after 9:00am.
- ✓ Match starting at **9:30am** and completion approximately 12:30-1:00pm.

PAYMENT INFO - Match Fee's:

- \$40.00 For General Match Entry/Non-Members
- \$20.00 For B.P.R.C Members
- \$00.00 For First Time Shooters (To Our Club)/Young Guns (12-18)



Please contact us for any more information via email: buchanprecisionrifle@gmail.com



IMPORTANT INFO

Loan rifles available for \$20, supplied with match ammo and ready to go.

- ✓ If you are bringing a firearm, you **MUST** have your license with you and leave the firearm in the vehicle unless instructed to bring it to the firing line.
- ✓ Any junior shooters (aged 12 to 18 – under the age of 18) is required to be always accompanied by a fully licensed legal supervisor or parent/guardian.
- ✓ Juniors **MUST** wear eye/ear protection whilst handling a firearm.



Thursday 19th March 2026

B.P.R.C Annual General Meeting 2026



Tag along for a good night out with the guys talking business, banter is always a given.

Date: 19/03/2025 at 6:00PM

Food 7:00PM & Meeting

Location: GunSport Trading Bairnsdale. Please contact

buchanprecisionrifle@gmail.com

for further details



Are you looking to stay safe, independent, and confident at home? Our Occupational Therapy team is bringing two of our most popular programs –



AlertABLE + AdaptABLE Group Sessions



AlertABLE and AdaptABLE – to the Buchan and Gelantipy communities for a special one-day visit!



AlertABLE

Learn about and trail personal alarms that can help you call for help after a fall or medical emergency. Great for older adults, carers, and people with disabilities.



AdaptABLE

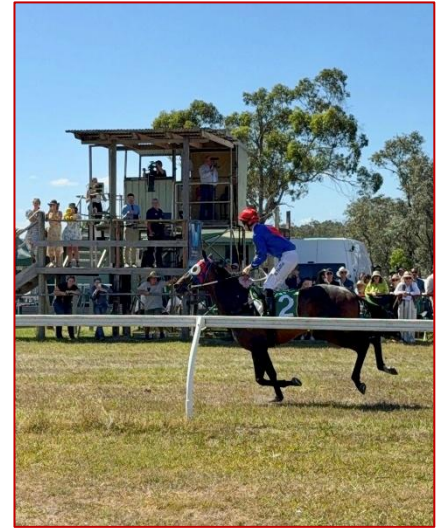
Explore assistive products that help you stay safe and independent with everyday tasks – from cooking to showering and everything in between. Test out different items and get advice tailored to your needs.



Where: Buchan Hall **When:** Thursday 19 March 2026


Time: Group sessions start from 10:00am (morning tea provided)

Costs: Costs: \$200 (ex GST) from your Support at Home Package. This includes group education, written advice, and a product quote. A government subsidised rate of \$40 is available for no-compensable clients. Additional fees apply for help to set up your products at home.

Bookings essential. Call 5155 8370 OR email serviceaccess@glch.org.au



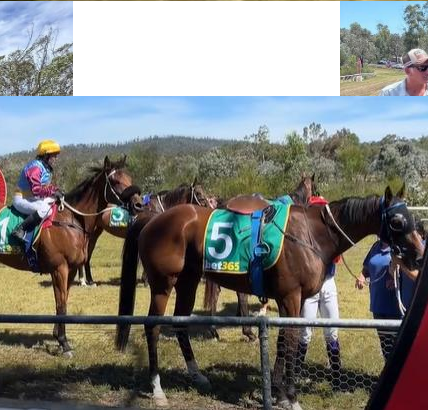



BUCHAN & GELANTIPY RACING CLUB
 139 YEARS OF PICNIC RACING
 AT

 (SOUTH OF BUCHAN)
SATURDAY, FEBRUARY 14TH, 2026
 (6) TROPHY RACES AND \$40,000 PRIZE MONEY
 • FOOTBALLERS' GIFT • A HOST OF ATTRACTIONS •
 • FASHIONS ON THE FIELD • PRIZES AND NOVELTIES GALORE •
www.buchanracesatcannicreek.com.au
President: Peter Sandy. Phone: 0439 455 136 Secretary: Ruby's Sandy. Phone: 0439 443 090 Email: cannicreek@gmail.com
 Treasurer: Ian Doolley. Phone: 0488 516 899 Email: ian@dool.com.au
ENJOY GREAT HOLIDAY ENTERTAINMENT WITH FAMILY AND FRIENDS

The 2026 Canni Creek Picnic Races

brought a lively crowd to Buchan South for a classic day of country racing and community spirit. Spectators enjoyed a full program of races, great weather, and the relaxed bush-track atmosphere the event is known for. Families set up picnics, kids enjoyed the activities, and locals caught up over food stalls and fundraising stands. It was another successful year celebrating the region's racing tradition and strong community







East Gippsland
SHIRE COUNCIL

East Gippsland Volunteer Honour Roll Registration

Are you a volunteer?

Or do you know someone who contributes to our community in a volunteering capacity?

Not all heroes wear capes – many are everyday people who quietly give their time to support others and strengthen our communities.

East Gippsland Shire Council is getting ready to celebrate National Volunteer Week 2026 (18–24 May) and is inviting the community to reflect on the incredible contribution volunteers make across the region.

East Gippsland has one of the highest volunteering rates in the country, with 19.2 per cent of residents actively volunteering – well above the regional Victorian average. From sports clubs and emergency services to community groups, schools and environmental organisations, volunteering is a defining feature of life in East Gippsland.

Register your details now to be formally recognised on the East Gippsland Honour Roll, to be updated annually during National Volunteer Week in May.

<https://www.eastgippsland.vic.gov.au/forms/east-gippsland-volunteer-honour-roll-registration-form>

Forms are also available at Council's customer service centres or call our Customer Service Centre on (03) 5153 9500.

ST. DYPHNA CELEBRATES ITS

A special Mass was held at Buchan's St. Dymphna's Church on Saturday morning of the 20th of February. The service was officiated by Bishop Greg aided by Father Yep from Lakes Entrance as well as Father Joe and Father Mark from Bairnsdale.

The congregation of between 30-40 people included several descendants of the O'Rourke Family. Bishop Greg thanked Mary Wheeler and Laurie Harrington for their role as caretakers of the church. He shared fond memories of visiting St. Dymphna's and Mary's passionfruit sponges and scones.

Music was provided by Lisa Downey who played the trumpet. Afterwards all were invited for morning tea at the newly opened River Retreat Café.



The members of the O'Rourke family attended because they are the descendants of David O'Rourke who owned Oakern/Oakhern and where mass was held before St Dymphna's was opened on the 10th May 1896 by Bishop Corbett

FREE
Tea, coffee & light meal provided

Practical Takeaways
With handouts & goodies



Plan to be Resilient



MARCH WORKSHOPS
25 Benambra
26 Orbost
31 Bairnsdale
 Phone to register **1300 045 747**

Benambra | 25 March | 10am - 1pm Memorial Recreation Reserve, 32 Tip Road

Structured business planning for Gippsland farmers navigating variable seasons and financial pressure **AGRICULTURE VICTORIA**

Plan to Be Resilient is a practical, hands-on workshop designed for farmers and small agri-business operators who are often time poor but know that *taking time to plan is critical*.

Resilient farm businesses do not eliminate risk – they prepare for it with clarity and intent.

Over three focused hours, participants will work through:

- ✓ Where seasonal variability, market volatility and cost pressures create vulnerability
- ✓ Key financial and operational drivers that most influence profitability and long-term viability
- ✓ Structural pressure points within your current business model that may limit your flexibility in challenging seasons
- ✓ Practical decision-making tools to strengthen preparedness, improve financial confidence and support operational planning and implementation
- ✓ Clear strategic priorities to guide investment, risk management and growth decisions over the next 12–24 months

This event is being delivered by NEX Business Farming Wellness on behalf of Agriculture Victoria as part of the Victorian Government's statewide Drought Support Package.

GLaWAC worked with Parks Victoria on an exciting project to make Culture a more prominent and visible presence in the Buchan Caves Reserve.

This included a powerful new yarning circle designed and built by our Business Enterprise Services team.



Learn more here:

<https://gunaikurnai.org/putting-culture-front-and-centre.../>



DECISIONS THAT DRIVE SUCCESS

– Proven techniques for effective on-farm decision-making

Success depends on sound decision-making. This is especially so in times of crisis and change. This Workshop provides a proven and practical approach to managing competing priorities so you can make better decisions, rebuild your resilience and capacity and adapt your business to recover from drought and other challenges.

- Learning how to identify key trigger points or events for their farm business, review strategic priorities and know how to optimise resources to mitigate risks, manage costs and seize opportunities;
- Improving their readiness to respond to these trigger points to enable rapid pivoting and minimising disruptions to operations;
- Identifying key stressors (internal/external) unique to their locality and business situation and learning how to navigate and prioritise risks and opportunities;
- Building capacity and confidence in making timely and sound decisions that support business profitability and know how to implement those decisions with on-track/off-track checkpoints and milestones; and
- Strengthening techniques to improve overall adaptability to challenges and change - including contingency planning and access

KEY DETAILS

Lakes Entrance – Bellevue on the Lakes

TUESDAY 21st April 2026
9:00am – 3:30pm

COST: FREE (fully funded by Agriculture Victoria)
Morning tea and a light lunch provided.

For information: *Ion Group*
Leigh Crocker (ION Group)
M: 0419 359 409
E: lcrocker@iongroup.com.au





Pictured: Federal Member for Gippsland, Darren Chester, is pleased with the progress and quality of the major redevelopment at the Buchan Recreation Reserve.

YOU BUCHAN BEAUTY: PAVILION IN GREAT SHAPE

The major redevelopment of the Buchan Recreation Reserve, with a multi-million dollar community pavilion and sporting change rooms, will serve the region for generations to come, according to local MP Darren Chester.

The Federal Member for Gippsland visited the site this week and was impressed with the workmanship of local firm Cadbuild Constructions.

“We might have had to fight for funding every step of the way, but the major upgrade of the facilities is a Buchan beauty,” Mr Chester said.

“After initially missing out on Black Summer bushfire recovery grant a few years ago, we were able to convince all three levels of government to get behind a multi-million dollar project to redevelop the netball courts and community pavilion.

“In total, more than \$4 million will be spent by the Shire, state and federal governments on a project that has been years in the making.

“Well done to the volunteer committee members for working so hard, in partnership with all levels of government, to develop multi-purpose facilities which will be welcomed by the community.

“Local firm Cadbuild Constructions is delivering a fantastic facility which will be a welcome surprise for any footballer or netballer familiar with the old wooden Buchan changerooms.”

Mr Chester said the new facilities would also offer a large function area, commercial kitchen, public toilets, and be available for relief and recovery activities in future natural disasters.



“I know how hard the community has worked to fundraise and keep this vital community facility functioning, and we are all looking forward to the project being completed in the next couple of months,” he said. “After the initial false start, this is a great example of all levels of government listening and understanding the importance of facilities that bring the community together, particularly in remote areas.

“The old facilities were outdated, unfit for purpose and unsafe for athletes, particularly the changerooms and netball/tennis courts.

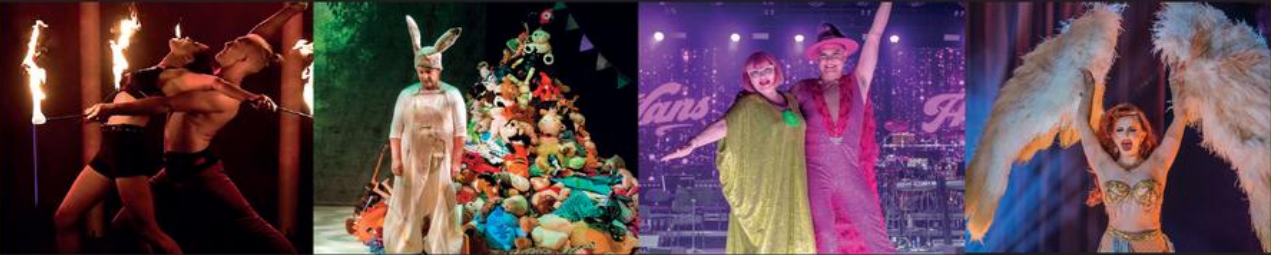
“This redevelopment will deliver a modern hub for local sport and community activities, creating a safer and more welcoming space for players, families and visitors to enjoy for generations to come.”

THE FORGE



03 5152 1482

eastgippsland.vic.gov.au/theforge



Where Community and Culture Unite



Discover upcoming performances at the Forge Theatre, and book your show tickets online.

IMMERSIVE is coming to the forge theatre for the entire month of march 2026

stgippsland.vic.gov.au/leisure/whats-on-and-buy-tickets

immerse yourself in a month of live creativity, experimentation, and community engagement.

MARCH @ THE FORGE

WATTLE HOUSE SHOWCASE: WATTLE FESTIVAL

SATURDAY 14 MARCH
2:00PM - 7:30PM

MARCH @ THE FORGE

PASTELS WORKSHOP

SATURDAY 14 MARCH
1:30PM - 3PM

MARCH @ THE FORGE

LIVE LOCAL AND ORIGINAL

SUNDAY 15 MARCH
2PM - 5PM

MARCH @ THE FORGE

WATER DRAGON: A COLLABORATIVE PAINTING

MONDAY 16TH - FRIDAY 20TH MARCH
10:00AM - 3:00PM

MARCH @ THE FORGE

EAST GIPPSLAND BRASS PRESENTS: AN EVENING OF TRULY ORIGINAL, CREATIVE MUSIC!

FRIDAY 20 MARCH
7:30PM - 8:30PM

MARCH @ THE FORGE

DUNGEONS & DRAGONS

HEROES OF THE FORGE: DUNGEONS AND DRAGONS LIVE

SATURDAY 21 MARCH
2PM - 6PM

MARCH @ THE FORGE

WACKY WOMBAT: COOKING UP A SUNNY DAY

SUNDAY 22 MARCH
10:00AM - 11:00AM

MARCH @ THE FORGE

PERFUME OF WORD: POETRY READINGS AND PERFORMANCES

FRIDAY 27 MARCH
7:00PM - 8:30PM

MARCH @ THE FORGE

EAST GIPPSLAND'S CREATIVE SUMMIT, CONNECTION - FUTURE - SHARING

SATURDAY 28 MARCH
10:00AM - 3:00PM

MARCH @ THE FORGE

THE BOX SHOW

THE BOX SHOW

TUESDAY 31 MARCH
10AM - 11AM

More from

NANCY LOUSADA'S SCRAPBOOK

Written in 1951

HOW SOME OF THE LOCAL NAMES AROSE

Amazingly, there is considerable uncertainty regarding the origin of many place names in the Buchan District, authorities even differing as to the derivation of the of Buchan.

In an article, "The Origins of Gippsland", (published in the Victorian Historical Magazine, vol II, May 1912), A. W. Greig attributed it to an aboriginal word "Buk-kan" but can give no actual authority. Variations of this are that of Mr. Bulmer, an early Gippsland resident and one of the first supervisors of the Lake Tyers Aboriginal settlement. He maintained that the name was derived from "Buk-an", the material used by the aboriginal women in making 'dilly-bags'. Yet another writer suggest that the original name was "Bukkin-munje"—(the termination-'munje' is common to many Gippsland place names of aboriginal origin) and states that it referred to a type of bag used to carry food and small articles.

On the other hand, according to Saxton's "Place Names of Victoria", it was ¹named after the town of Buchan in Scotland, from where, presumably. Some of the early settlers came.

This latter seems a very feasible theory for not only the Macleods, but many of the early arrivals were truly Scots in origin but the general feeling of the local residents generally inclines towards the aboriginal derivation.

Some names of local properties are easy to trace to their beginnings, thus "Kingsleigh", first settled by a Mr. King "The Glen", situated as it is in a lovely glen in the valley above "Sunny Point". "Sunny Point" itself is descriptive for this property, beautifully situated where the river bends.

Other names were dictated by sentiment. "Murrindal Park" now generally known as Murrindal Station, was called after Dickson's old home in Scotland and the house closely resembles its original in style and layout.

"Colina" the lovely old property of the Dalley family, originally gained its name in tribute to Mrs. MacLeod whose christian name it was. The boat owned by Mr. MacLeod which brought the family to East Gippsland was also named the "Colina".

Mt. Tara and Tara Creek (the usual reference today is to "The Tara") are names which seem to arise from repeated mispronunciation for, according to a daughter of Dr. Mackieson, the original name for this part of the district was the "Terror". This appellation arose from the hostile attitude of the natives of this area toward the early settlers.

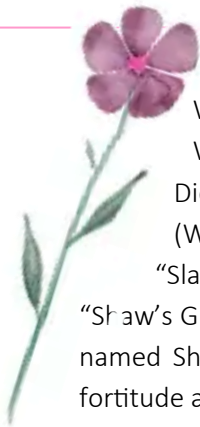
"Aucharn", very frequently spelt "Oakern", is also of disputed origin. Suggestion is that it is named after the capital of the Isle of Mull, a second is that it is the name for a poplar tree (two huge poplar trees, whose age can only be guessed at, are a noted land mark on this property). A third suggestion is that the name is native and means "green and rolling pastures".



Native names were freely used. Dr. Mackieson's first selection at South Buchan is still named "Tullatarook" which means "Little Yam".

Other properties taking native names are "Gnarwin" (Black Cockatoo), "Maroubra" (home on a river), "Larnick" translation of this still uncertain, "Coolamert". (white cockatoo), and "Wahroonga", the property of Mr. Ben Whitaker, which means "Place of healing).

Unfortunately, no clue exists as to the origin of a number of particularly tantalising place names.



HOW SOME OF THE LOCAL NAMES AROSE cont...

Who named "Frying Pan Creek" and why.

Was "Balleyhooley" the Irish home of Jerry Foley who worked the selection so long ago?

Did "Blowhard" get its name because of the force and constancy of the winds in its narrow valley. (Wind is not at all prevalent in Buchan, generally speaking, but "Blowhard" is a very windy place.

"Slaughterhouse", of course took its name from the massacre of the natives which took place there.

"Shaw's Gully" did not take its name from an early settler who lived there but from the fact that a family named Shaw camped there during which time a child was born. Mother and child with true pioneer fortitude apparently travelled onwards the next day.

The district abounds in fascinating names. These are only a few of them.

NOTES-Rhonda Coates

BUCHAN:

Stewart Ryrie's map of 1840 - John Rhodes Wilkinson's- **Buckan Station** (Buchan), Mr. Edward Lord's **Calantaba Station** (Gelantipy), (Edward Bayliss was his manager) and David Parry Okeden's **Merindal Station** (Murrindal) Mr Brooks-**Coangillinbren Station** (Wulgulmerang) Mr Oakden's- **Toongunbuka Station** (Suggan Buggan)



Ryrie was sent by the Government to determine map this side of the Snowy including what land that had been taken up by squatters. He had an Aboriginal guide who gave him the names of landmarks such as rivers and mountains, and stations.

The name and spelling of "Buchan" is also thought to have been an Aboriginal name "Buccan" meaning "a stack of rocks with a hole in it".

Peter Gardener claims local aborigines called Buchan Station "Tirtairleck" their word for "frog".

KINGSLEIGH

John Henry King-Great grandson of Governor Phillip Gidley King, third Governor of New South Wales.

OAKERN/AUCHARN/AUCHERN

By 1875 it was owned by David O'Rourke who had it for a number of years. Mass was held there regularly until St Dymphna's was officially opened in May 1896. Apparently Frank Lousada changed the spelling to Aukern when he and his wife Nancy owned it. Rohan Flower is the present owner.

Get help with your aged care options

Whether you're looking for help at home or thinking about aged care, we can help. Centrelink Aged Care Specialist Officers can give you in-depth information about your aged care options.

Spend some time with Cindy, an Aged Care Specialist Officer, and Grant a Financial Information Services Officer from Services Australia Centrelink!

When: Tuesday 17th March 2026

Where: Buchan Neighbourhood House

Time: 11:00am - 1:00pm



Neighbourhood Houses
The Heart of Our Community

There will be plenty of time for questions, so feel free to bring yours along!

To book an appointment with an Aged Care Specialist Officer: call 1800 227 475 or ask at your local Services Australia service centre. Whether you're looking for help at home or thinking about aged care, Centrelink Aged Care Specialist Officers can give you in-depth information about your aged care options.

You can access emergency care from home with the **BRHS**

Victorian Virtual Emergency Department

For non-life-threatening emergencies, the Victorian Virtual Emergency Department connects you with emergency doctors and nurses via video from anywhere in Victoria.

For emergencies or life-threatening situations, come straight to the Emergency Department or call 000.

Register via the VVED website:
www.vved.org.au/patients



VIRTUAL EMERGENCY CARE

Access Emergency Care from home for non-life-threatening emergencies

FREE | BOOKINGS REQUIRED

EAST GIPPSLAND
SHIRE LIBRARIES



Women's Health Information Session for Seniors

Bairnsdale Library
Monday 23 March
10.00 am - 11.30 am

Lakes Entrance Service Centre
Thursday 12 March
10.00 am - 11.30 am

Paynesville Service Centre
Monday 23 March
2.00 pm - 3.30 pm



JOIN US FOR THIS INFORMATION PACKED SESSION!

Are you or someone you know interested in hearing from your local care professionals?

We are pleased to welcome guest speakers Carolyn Nelson – McGrath Foundation Breast Care Nurse, and Heather Daly – a specialist in women's health and continence. They will be joining us to share valuable information and insights from their fields of expertise.

There will be opportunities to ask questions during the session, as well as the option to speak privately with either Carolyn or Heather.

Book Now

At your library
5152 4225

www.trybooking.com/eventlist/eastgippslandshirelibraries
Scan the QR code



Mobile Library Dates 2026

TUESDAY: Mar 24, Apr 7, Apr 21

- 9:00-10:00 - Buchan Main Street
- 10:30-11:30 - Buchan Neighbourhood House
- 1:30-2:30 - W Tree—SIBA

TUESDAY: Mar 17, Mar 31, Apr 14

- 9:00-9:45 - Gelantipy Bush Nurse
- 10:30-11:30 - Buchan Neighbourhood House
- 12:45-1:30 - Buchan Primary School



What can you do at this mobile service centre?

- Borrow books, CD's, DVD's audio books and more
- Pick up a Council newsletter and subscribe
- Lodge a report or request
- Pay an account / make electronic payments
- Make enquiries, collect and lodge application forms
- Register your dog and cats
- Access and complete surveys
- Learn about and provide feedback on projects
- Use a computer with free internet access

Tim BULL

State Member for Gippsland East



Buchan Caves Reserve Image courtesy of Visit Victoria Content Hub

📍 143 Main Street, Bairnsdale VIC 3875

📞 03 5152 3491

✉️ tim.bull@parliament.vic.gov.au

THE NATIONALS



Darren Chester

Putting Locals First

#lovegippsland



NATIONALS for Gippsland

www.darrenchester.com.au

Authorised by Darren Chester, The National Party of Australia, Level 1, 89 Raymond Street, Sale, VIC, 3850.



Bespoke accommodation within the heart of Buchan



p: 03 5155 9419
w: buchanstays.com
e: hello@buchanstays.com



MASSAGE & NATUROPATHY

MASSAGE and NATURAL HEALTH CARE at the Buchan Neighbourhood House including: Naturopathy, Herbal and Homeopathic remedies, Relaxation, Aromatherapy, Sports Therapies, Remedial Massage Therapy, Pre and Post Natal and baby massage.

Available for adults and children of all ages.

\$70 one-hour session * Gift vouchers available *

For further information and bookings please contact the Buchan Neighbourhood House or Sharon Dent
silvaust@gmail.com or call **0468 387 524**

Alexandra Jenkins
Cattle Ultrasound Technician

Ph: 0455 068 599
Email: avscanning.info@gmail.com



Providing the following services:

- ✓ Pregnancy Ultrasound Testing
- ✓ Foetal Aging
- ✓ Foetal Sexing
- ✓ Reproductive Abnormalities



BLACKFORREST
Fireworks Displays



0438 550 979
blackforrest.info@gmail.com
www.blackforrestfireworks.com.au

WWOOF AUSTRALIA
Est. 1981

Supporting the growth of organic farming and sustainability within Australia

WWOOF.COM.AU
0455-023-173



Contact Buchan Neighbourhood House to advertise your business in this newsletter!

\$55 FOR 12 EDITIONS
OR \$5.50 PER EDITION
INCL GST



Rohan Rogers
0430 003 544

info@blowflyhillphotography.com
www.blowflyhillphotography.com

- | | |
|--------------------|-------------------|
| Events | Commercial |
| Sports | Family |
| Equestrian | Portraits |
| Heirlooms | Headshots |
| Landscapes | Websites |
| Memorabilia | Stockwork |
| Framing | Livestock |

This newsletter is delivered to every household in the district (on or around the 15th day of the month) and is also available online at buchan.vic.au or via Facebook at Buchan Neighbourhood House. All editions are available electronically at the State Library online site (Trove). If you are not receiving the newsletter please contact us and we will ensure that a copy is mailed to your address.

Newsletters can be posted for an annual fee of \$18.00 incl. GST to anyone outside the district, or contact us with your email address and we can send an electronic version for free. Dates for submissions will be advertised in each edition and we welcome your contributions. Submissions closing date for the next edition is **Wednesday 1st April 2026**. We welcome articles and contributions from everyone and encourage our local clubs, groups, agencies, organisations and businesses to send us their information. Submissions can be sent to info.buchan@gmail.com or drop them into the Neighbourhood House. The Buchan Neighbourhood House takes no responsibility for opinions expressed by contributors to the *Buchan Phoenix*.

The Editors reserve the right to reject articles and advertisements and to edit submissions if necessary.

All submissions should include the author's full name, address and phone number, but may be anonymous if preferred. Buchan Neighbourhood House is open Monday to Thursday from 10.00am—4.30pm. Advertisements are \$55 for 12 editions or \$5.50 per edition including GST.

Buchan Neighbourhood House contact details:

Buchan Neighbourhood House is dedicated to supporting carers in Victoria and offers a warm, secure, and welcoming environment.

Monday – Thursday 10:00am-4:30pm

6 Centre Road, Buchan

0493 070 332

03 5155 9216

Our organisation is Carer Friendly and helps connect carers to necessary services. We have strong ties with

Carers Victoria and participate in their events, workshops, and informational opportunities for both carers and staff.



East Gippsland Shire Outreach Services

The mobile bus service provides an opportunity to use the library service and engage with their staff on Council matters. All community members are welcome. Please see the schedule below for when the bus is visiting your community.

What you can do at the mobile service:

- Borrow books
- Pick up a Council newsletter
- Lodge a report or request
- Pay an account / make electronic payments
- Make enquiries, collect and lodge application
- Register your dogs and cats
- Access and complete surveys
- Learn about and provide feedback on projects
- Use a computer
- Have a chat and much more



The next services will be:

Buchan Neighbourhood House

Every Tuesday from 10:30am—11:30am

Buchan Primary School

Tuesday 17th March 12:45pm—1:30pm

Tuesday 31st March 12:45pm—1:30pm

Tuesday 14th April 12:45pm—1:30pm

Buchan Main Street

Tuesday 24th March 9:00am—10:00am

Tuesday 7th April 9:00am—10:00am

Tuesday 21st April 9:00am—10:00am

Gelantipy (Bush Nurse Centre)

Tuesday 17th March 9:00am—9:45am

Tuesday 31st March 9:00am—9:45am

Tuesday 14th April 9:00am—9:45am

W Tree (SIBA)

Tuesday 24th March 1:30pm—2:30pm

Tuesday 7th April 1:30pm—2:30pm

Tuesday 21st April 1:30pm—2:30pm



Catholic Church

St Dymphna's,
Woodgates Road, Buchan.

Meets 3rd Saturday of the month at 9am until further notice.

For service details contact
Mary Wheeler 5155 9330

Anglican Church

St Mary's,
Main Street, Buchan.
Café Church

Meets 5th Sunday of month at 11:00am.

Next Meeting
Sunday 29th March
11:00am

For details contact
Rhonda Coates 5155 9373