

Buchan and District Community Plan

2017—2021

Version 1



(photo courtesy of Scott Kingman)

The Buchan Community Plan acknowledges the Gunnaikurnai People, the Traditional Owners of the land on which we gather, and pay our respects to their Elders both past and present.



Community Facilities

Neighbourhood House
East Gippsland Shire Outreach
Community Garden
Buchan and Gelantipy Bush Nursing
Buchan Primary School
Buchan Early Childhood Development Centre
Buchan Police Station
W Tree Food Co op
CFA
Buchan Butter Factory
Buchan South Avenue of Honour
Buchan Hall
Gelantipy Hall
Buchan Recreation Pavilion and sports grounds
Wulgulmerang Recreation Pavilion
Buchan Valley Golf Club
Buchan Rifle Range
Buchan Rodeo
Canni Creek Race Track
Buchan Cemetery

Churches

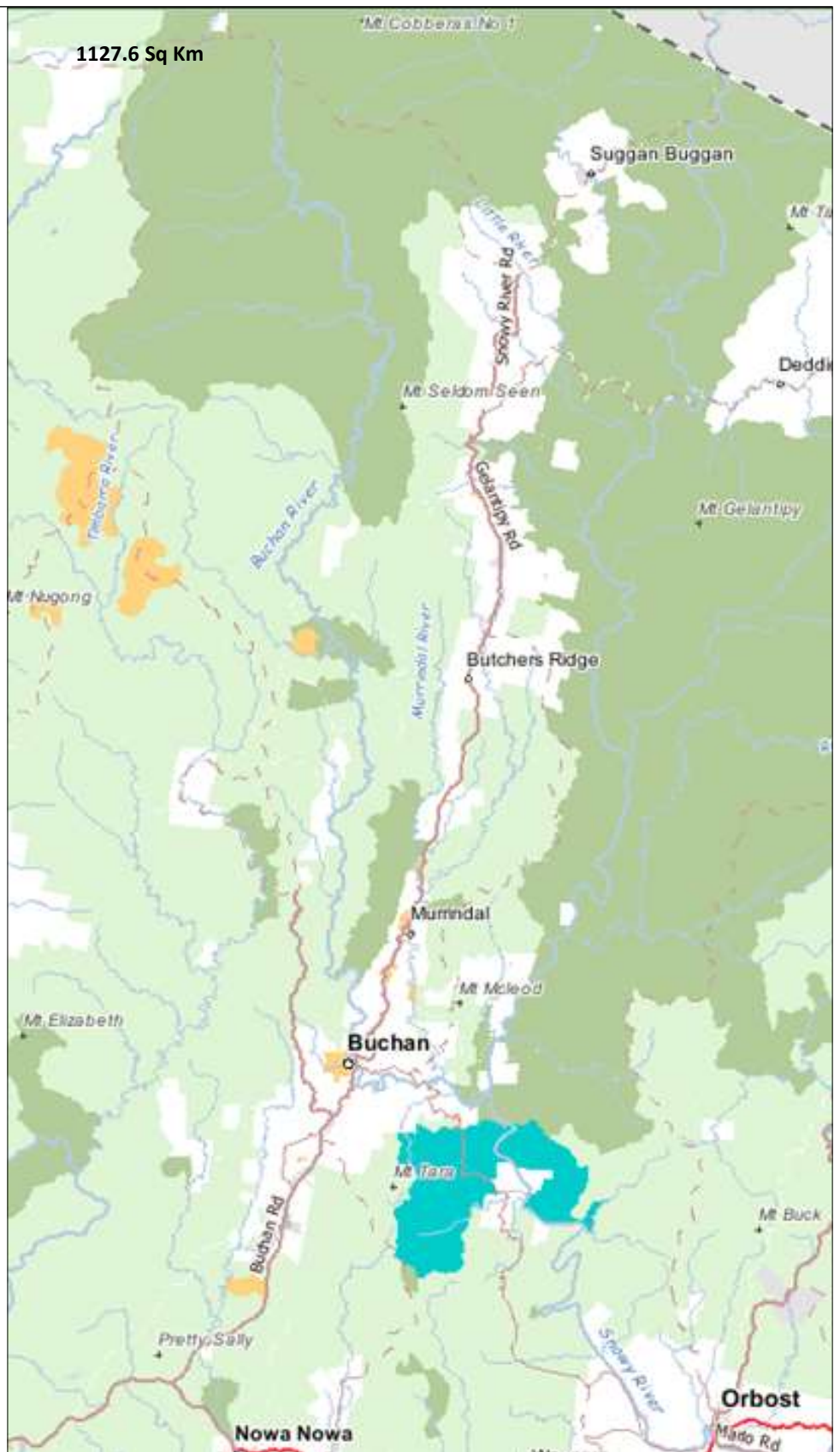
Anglican
United
Catholic
Siba Retreat Centre

Businesses

General Store and Post office
Roadhouse
Karoonda Park
Hotel
Café
Garage
Towing
Excavations
Plumbing
Livestock Transport
Dysons bus line
Building
Courier
Sibelco
Snowy River Rafting
Stonehenge Museum
WWOOF
Handyman
Garlic
Firewood
Environment Protection

Accommodation

Motel
Hostel
Bed and Breakfasts
Log Cabins
Farm stay Accommodation
Camping



Our Values

We value our natural environment, our sense of community, our safety, our health and wellbeing and our lifestyle and community assets.

[Buchan and District – Community Profile](#)

Major Features

Buchan and District is a rural area, consisting largely of farming land and native vegetation. It includes the localities of Black Mountain, Buchan, Buchan South, Butchers Ridge, Canni Creek, Gelantipy, Gillingall, Glenmore, Murrindal, Suggan Buggan, Timbarra, W-Tree, and Wulgulmerang. Buchan is the main town and is located on the Buchan River, approximately 75 kilometres from Bairnsdale and 350 kilometres from Melbourne.

Major features of Buchan are the Buchan Caves, Buchan Caves Reserve, limestone rich valleys, picturesque hills, numerous waterfalls, gorges and historic bridges. Buchan is the home to the Snowy and Buchan Rivers and where they meet. There are numerous accommodation places in and around Buchan along with some galleries, eateries, the Howitt Bicycle Trail, Buchan Golf Course, tourist drives, self guided historical walking tours and local town businesses. The surrounding valleys and hills provide many opportunities for fishing, bushwalking, bird watching, trail riding, kayaking, white water rafting, four wheel driving and horse riding.

Whilst Buchan is best known for its famous spectacular underground caves its history as one of the oldest townships in Victoria goes back much further than the discovery of the caves. It also has fossils that depict the mega fauna that existed in the region some 20,000 years ago. Some fossils are in view on the new Buchan Hotel stone walls.

The township celebrated its 175th anniversary in March 2014.

History

European settlement first entered the area in October 1838 and Buchan station was established in January 1839's. Free selection after 1868, and a township was proclaimed in 1873 taking its name from the station. It is thought that the name Buchan was taken from an Aboriginal word Bukkan-mungie to which various meanings have been ascribed, one interpretation of its meaning is place of grass bag and another is a 'place of rocks with holes in them'.

Farming included cattle, sheep and crops. Wheat, oats, barley, maize, hops, arrowroot and beans were grown on the river flats at various times. Dairying operations, initially for local consumption, commenced prior to the turn of the century. This expanded into several cheese factories and a butter factory which operated for many years. Sheep and cattle grazing increased as settlement spread and cattle sales began in Buchan in 1901. The township grew as closer settlement of the farming land meant more demand for services.

A number of mines were opened as early as 1869 including silver, gold and lead. Some of the bigger mines were profitable but most were short-lived. Some commercial quarries operated in the early 1900's and marble from the quarries was used to build the Shrine and State Library in Melbourne and buildings in London and throughout the state. From the 1950's a quarry also produced crushed lime for agriculture, paper manufacture and other uses.

Wattle bark stripping was an important industry and small spot mills worked in the surrounding bush. Following World War 2, two large sawmills and several smaller mills operated in Buchan providing employment. The last mill ceased operation this year.

There were small groups of Aborigines in the area but their numbers declined following European settlement. At Cloggs Cave near Buchan, evidence has been found of Aboriginal occupation in prehistoric times.

The Buchan Caves were surveyed in 1889, although their existence was well known in the 1880's. Fairy Cave was discovered in 1907 by the local caretaker, Frank Moon, and was opened for public inspection in 1908. Royal Cave was opened in 1912 and by 1917 six caves were open to the public. In the 1920's camping facilities were developed near the caves to accommodate the number of tourists who visited the area on bus tours and who stayed in the local guesthouses, hotels or at the new campsite. The caves were closed during the war but reopened in 1946.

Residents in the district have experienced a number of environmental hardships over the last decade, including drought, two floods and three major fires. The fires in particular have impacted heavily on the farming, timber and tourism industries.

The Buchan Inn later became Riverview House and more recently Buchan Caves Hotel was opened in 1884. It burnt down early in the morning on Wednesday 9th April 2014 devastating the small township. In May 2015 a well attended community meeting was held and the notion of Crowd Funding was presented. A successful 60 day campaign was launched June 15th 2015 and closed on August 15th 2015 raising \$600,000 to aid in the rebuild of the pub. It is currently nearing completion.

People

The Buchan Business and Tourism Association is involved in the development of tourism, retail, commercial and industrial aspects of business in the district. There is a Buchan Township website, buchan.vic.au and a W-Tree Community website wtree.vic.au.

There is an Early Childhood Development Centre (Kindergarten) and primary school located in the Buchan Township. A local school bus service runs from W-Tree and Buchan South and a bus transports secondary students to Bairnsdale. Buchan Bus and Freight operates from W Tree to Bairnsdale via Lakes Entrance on Wednesdays and Fridays. There is a police station, CFA, SES and three churches also located in the Buchan Township.

The Buchan Neighbourhood House offers East Gippsland Shire Outreach Services, Adult Education Courses, community activities and events, public internet access and provides a hub for community development. A community newspaper, the Buchan Phoenix, is published to keep everyone up to date with community events and provide a local opportunity to have a say.

Parks Victoria has a strong presence in the area and together with the Gunaikurai Land and Water Board of the Buchan Caves Reserve, Snowy River National Park and the Errinundra National Park are the custodians of our natural features.

There are a number of sporting clubs in the area including a football, cricket, netball, tennis, golf and pony club.

There are Bush Nursing Centres in both Buchan and Gelantipy offering local access to healthcare both within the clinics and in the community. There is a dual response via ambulance pagers to enhance emergency response capabilities and reduce wait time in an emergency.

There is a Tibetan Buddhist Centre in W-Tree.

Issues that have effected the Community since the last plan

Pub burning down and being rebuilt and the crowd funding campaign

Renovations at Callemondah Café and BnB Accommodation and Renovation of the Buchan Motel

Floods

Fires

Storms

Reduction in volunteering

New CFA and SES facilities

Closing of the SES service

Our community groups and services all experience dwindling volunteer participation and a community that feels that it is too busy to assist with community development.

There is a critical mass of people who can assist with community development. We can join together to achieve fewer tasks and support each other to achieve tasks as a community.

Our Future

Buchan's greatest resources are our pristine natural environment and our ever dwindling circle of volunteers who support a cohesiveness and vibrancy community. There is the addition of newcomers to the area who bring new ideas and enthusiasm to expand the scope of what can be achieved by so few. This mix of people combine to give this district a unique character.

Focus Group Consultations

Members of the steering group are representatives on the following committees or represented a group and have contributed to the feedback

- Buchan Arts Council includes Buchan Flower Show
- Buchan South Avenue of Honour
- Buchan Heritage Group
- Buchan Neighbourhood House
- Buchan Hall and Recreation Committee
- Buchan Early Years Reference Group
- BBTA
- Buchan Bush Nursing

We had the following groups attend the focus group meetings

W Tree Gelantipy Wulgulmerang Gelantipy CFA
Gelantipy Hall

Sporting Groups Wulgulmerang Recreation Reserve and Knockout
Buchan Golf Club

Special interest Groups Friends of Buchan Cemetery
Buchan Heritage Group
Buchan Cemetery Trust
Buchan Bush Nursing

Business, parks and BBTA Callemondah
Buchan Lodge
Buchan Motel
WWOOF

Apologies to the meetings from Gelantipy Bush Nursing
Canni Creek Races
Buchan Rodeo
Living Library
Karoonda Park/Gelantipy Progress Association
Buchan General Store
Buchan Roadhouse
J & R Houghton Building and Stonehenge Caravan Park
Ontos Farm

We had verbal feedback from Catholic Church
Uniting Church
Parks Victoria, Buchan Caves
Buchan Primary School

Face to Face consultation with others stakeholders
Roadhouse
General Store
Pub

Community Consultation

Held on Saturday 17th September at 2pm to 5 pm at the Buchan Rec Pavilion
This opportunity was provided but was poorly attended.

Promotion

The development of the community plan has now been advertised in the Community Newsletter on

Feb. Article was about the Community Meeting Monday 14th March 2016 at the Neighbourhood House at 6pm.

Throughout 2016 we will be preparing the documentation and holding consultations to update the Buchan and District Community Plan. We value your input and would love to see as many of our community members there to share their ideas. Details about our plan can be found on the community website buchan.vic.au under community information.

May What the community has achieved so far from the last plan

June Information about the focus groups and dates for the meetings

July Focus Group meetings held throughout July at the time of printing and some great feedback and suggestions. Starting to see some trends in items and interests for our next plan.

Community Website

NH Facebook Page

Emails and snail mail including drop offs to all identified groups in the region to attend Focus Groups.

60 leaflets to residents in W Tree Gelantipy and Wulgulmerang for focus group meetings

What are the Action Plans

The original action plans were developed when we created the 2011 to 2016 Community Plan. They provide a resource and reference to all the ideas that are submitted providing strategies and actions and include the following headings...

WHO WILL LEAD THIS PROJECT/ WHO ELSE	PROJECT	ACTION	FIRST POINT OF CONTACT	AGENCIES INVOLVED	PROJECT COST/ funding opportunities	SUSTAINABILITY - how will this project be maintained - cost involved	TIME IN DEVELOPING	COMMUNITY BENEFIT - who benefits and how	OUTCOMES	PRIORITY Likelihood of achieving within 5 years scale 1 2 3 4 5 low→high
--------------------------------------	---------	--------	------------------------	-------------------	-------------------------------------	--	--------------------	--	----------	--

They provide details of a nominated project, who are the people, agencies and community groups involved, how they could be funded and most importantly provide the opportunity to set the priorities. The Action Plans are divided in to 4 categories and align with the East Gippsland Shire Plan.

Place (Sustainability)

People (Liveability)

Economy (Productivity)

Stewardship (Governance)

These are available in hard copy at the Buchan Neighbourhood House or online at <http://buchan.vic.au/community-information/community-plan-2017-to-2021/>

The following Strategies and Actions have been identified as the number one priorities for the 2017 to 2021 Buchan and District Community Plan.

Strategies and Actions

Place



Objective	Strategy and Actions	Time line	Who will be involved
Proactively manage our community and environmental impact	Investigate a central sewerage system for Buchan township Develop an action plan for this project	2017	Buchan Community Steering Committee
Develop a Community Firewood Collection Project	Investigate funding sources for a shared trailer and create a firewood collective for the W Tree Community	2017	W Tree Progress Assoc. Buchan Neighbourhood house

Economy

Objective	Strategy and Actions	Time line	Who will be involved
Continued improvements to telecommunications infrastructure in township and more remote areas including TV, Radio, Mobile Phone and internet	Continue to lobby federal government for improved services to W Tree and Gelantipy, Wulgulmerang and Timbarra Continue to request timelines for mobile blackspot improvement at Buchan South and Butchers Ridge Establish relationships with Federal member and Minister of Communications for improved services Provide information for community via the Community Newsletter	Ongoing 2017 Ongoing	Buchan Neighbourhood House Federal Government Telstra



Sibelco Lime mining Buchan

People

Objective	Strategy and Actions	Time line	Who will be involved
<p><u>Upgrades to Community buildings</u> Continue to upgrade and improve our community facilities to ensure maximum and continued use.</p>			
Recreation Pavilion	Install commercial standard Kitchen for community use particularly during emergencies as this is our Assembly area as part of the Community LIMP Plan. Identify grant opportunities for further improvements	2018 2018	Rec and Hall Committee Seasonal User Groups DELWP EGSC GippSport
Buchan Mechanics Hall	Floor requires repairs Develop programs for community at the Hall and increase usage of this facility Pathways at Hall to access building and disabled toilet. Requires disabled access with the added difficulty of the hall having split levels New floor covering in the kitchen Waterproof the building by installing a new roof	2017 2018 2019	Rec and Hall Committee DELWP EGSC
Butter Factory	Improvements to the outside of the building including painting Investigate funding opportunities to complete building works	2017 ongoing	Heritage Group
Undertake safety upgrades to Recreation Pavilion as it's the Designated Assembly area for fires The oval is the Community Safer Place in times of fire emergency	Purchase and install fire protection panels on all windows Fill in the gaps of panelled wood that sits from ground level to the start of the floor so fire cannot get underneath the building	2019	Rec and Hall Committee
Investigate the possibility of a Designated RV Camping area along the Buchan River	Investigate the Installation of a dump point in the township Contact relevant agencies and gather information about the effects and benefits of RV camping for Buchan	2017—2018	BBTA EGSC CMCA
Investigate the possibility of acquiring the Uniting Church to use as a Family History Centre and for archival materials to be stored	Buchan Arts Council to manage this facility Research Family History Tourism opportunities	2017	Buchan Arts Council Buchan Neighbourhood House Uniting Church East Gippsland Family History Group

Objective	Strategy and Actions	Time line	Who will be involved
Increased access to Health Services	Build new Buchan Bush Nursing Association Facilities Explore opportunities of providing independent living arrangement for ever increasing ageing population living in the more remote and isolated parts of the district.	2017 2018	Buchan Bush Nursing Dept of Health and Human Services
Commemorate and promote 100 years of Bush Nursing in Buchan	Memorial seat to be placed in the main street Interpretive sign on the History of Bush Nursing	2017 2017	Buchan Bush Nursing
Improvements to the facilities at the Buchan Cemetery	Lay sealed pathways Paving around the new rotunda to finish off the area Cemetery map to be displayed in the rotunda and pioneer families information	2017 2019	Buchan Cemetery Trust Friends of Buchan Cemetery
Develop Buchan and District Youth Opportunities	Explore options for Youth Worker and youth programs coordinator position Investigate local youth programs that could be offered	2017	Buchan Neighbourhood House



Stewardship



Objective	Strategy and Actions	Time line	Who will be involved
Buchan Footpaths and Mobility Plan	Liaise with EGSC on the current status of the plan and timelines for completing the shared pathway in the John Flynn Reserve	2017	Buchan Business and Tourism Association EGSC
Family Cycling track from the main street, though the John Flynn Reserve over the swing bridge to the bluff	Mowing contract started in Nov 2016 through BBTA. Consultation with the Shire on a proposed sealed pathway.	2017	BBTA EGSC
The River bank in the township needs to be cleaned up to provide better access for fishing, walking, picnics and swimming.	Create a friends of the Buchan river group to plan and have shared working bees. Create a Foreshore usage Plan for the Buchan river in the township	2017	Catchment Management Landcare EGSC Rec and Hall Committee
Improve access to the town from the Buchan caves Reserve to link the park to the town	Investigate the development of a walking track to the Caves Reserve from the Buchan Pub and past the Motel. Street lighting for the pathway to the parks	2018	BBTA EGSC Parks Victoria
Improve signage and visitor information in Buchan and District	Signage consultation completed in Nov 2016 by the EGSC with community input. Expected that new signage will be installed as per the recommendations however more signage was identified than is able to be completed in this project. Further discussion with EGSC regarding completing all signage requests	2017	Community Plan Steering Group BBTA EGSC
Solar lights on the Swing Bridge Lighting on the main street that is in character with the street scape Improve night time access in the township	Investigate the cost and install solar lighting at the swing bridge Install street lighting in the main street	2018	BBTA EGSC
Develop a Flood Mitigation Plan for the flood plains in the township due to the flooding of community buildings and shire facilities as well as private properties	Invite all interested parties and stakeholder to discuss the development of a Flood Mitigation plan and implementation of the plan	2017	Comm Plan Steering Group Rec and Hall Committee NH Heritage Group Affected Residents Catchment Management EGSC Landcare

Community Documents



New Residents Welcome Pack



Buchan and District Local Incident Management (LIMP) plan and booklet



Buchan and District Community Phone Book



Community Newsletter The Phoenix

Community Plan Steering Group Committee

Anne Brewer
Suzanne Davies
Gaye Sandy
Evelyn Schmidt
Rhonda Coates

Partners

The Buchan and District community values our partners in resourcing and supporting our projects.

East Gippsland Shire Councillors

East Gippsland Shire Staff

CEO	Gary Gaffney	Executive Services Communications and Corporate Strategy
Director Corporate	Maryanne Bennett	Finance Governance Information Services
Director Development	Paul Holton	Economic Development Statutory Services Recreation Facilities
Director Community & Strategic Development	Kate Nelson	Strategic Planning Community Programs Place Services
Director Operations	Chris Waites	Waste Works Capital Projects

Stephen Kleinz	Senior Economic Development Officer
Lynda Arnold	Library Services
Amelie Boucher	Youth Services
Andrea Court	Arts and Events
Laura McDonald	Emergency Services
Mark Taylor	Parks
Jeanette Signor	Tourism

Parks Victoria	Will McCutcheon	District Manager East Gippsland at Parks Victoria
	Tanya Taylor	Chief Ranger Commercial Operations East Gippsland District
	Leanne Hodge	Buchan Caves Reserve

East Gippsland Catchment Management Authority

Ken Judd

Gunaikurnai Land and Waters Aboriginal Corporation

DELWP Senior Property Officer Tracey West

Business and Tourism East Gippsland

Vicroads

GippSport

Executive Officer Barry Switzer
Program Coordinator Gene Parini
Jaquie Nethercote
Ryan Evans

State Government of Victoria Representative Tim Bull
Federal Government of Victoria Representative Darren Chester

The Buchan and Community Plan is a working document that will provide information as a work in progress.
It indicates a commitment to do further work in the area outlined in the document.
To identify the current document it will have the year and version on the front cover.